

*J1.1*  
"SOUTHERN ASSOCIATED SCHOOLS JUNIOR"  
Charter of Operations  
[\(Index\)](#)  
ASSOCIATED & CATHOLIC COLLEGES  
  
OF  
  
WESTERN AUSTRALIA

Last accessed by ACC staff February 7, 2021

Update 1 for 2021

**ASSOCIATED & CATHOLIC COLLEGES  
OF  
WESTERN AUSTRALIA  
"SOUTHERN ASSOCIATED SCHOOLS JUNIOR"**

**- INDEX -**

<b>ITEM NUMBER</b>	<b>ITEM</b>	<b>PAGE</b>
1.	<a href="#"><u>AIMS</u></a>	3
2.	<a href="#"><u>INVOLVEMENT</u></a>	3
3.	<a href="#"><u>PARTICIPATING SCHOOLS</u></a>	3
4.	<a href="#"><u>CONTACTS</u></a>	3
5.	<a href="#"><u>MEETINGS</u></a>	3
6.	<a href="#"><u>SPORTS</u></a>	4
7.	<a href="#"><u>DAYS OF PLAY</u></a>	4
8.	<a href="#"><u>HOURS OF PLAY</u></a>	4
9.	<a href="#"><u>GENERAL CONDITIONS OF PARTICIPATION</u></a>	4
	9.1 <a href="#"><u>DRESS</u></a>	4
	9.2 <a href="#"><u>STAFFING</u></a>	5
	9.3 <a href="#"><u>HOST SCHOOL</u></a>	5
	9.4 <a href="#"><u>UMPIRES/REFEREES</u></a>	6
	9.5 <a href="#"><u>INTERCHANGE/SUBSTITUTION</u></a>	6
	9.6 <a href="#"><u>SEND OFF RULE</u></a>	6
	9.7 <a href="#"><u>POINTS</u></a>	6
	9.8 <a href="#"><u>FORFEITS</u></a>	6
	9.9 <a href="#"><u>PROTECTIVE EQUIPMENT</u></a>	7
	9.10 <a href="#"><u>REPORTING OF RESULTS</u></a>	7
	9.11 <a href="#"><u>FIXTURES</u></a>	8
	9.12 <a href="#"><u>VENUES</u></a>	8
	9.13 <a href="#"><u>FINAL TEAM PLACINGS &amp; EXTRA TIME REQUIRMENTS</u></a>	8
	9.14 <a href="#"><u>TROPHIES</u></a>	8
	9.15 <a href="#"><u>WEATHER POLICY</u></a>	8
	9.16 <a href="#"><u>MERCY RULE</u></a>	9
<b>APPENDICES</b>		
NO 1	<a href="#"><u>BASKETBALL</u></a>	
NO 2	<a href="#"><u>TOUCH</u></a>	
NO 3	<a href="#"><u>SUPER 8'S (CRICKET)</u></a>	
NO 4	<a href="#"><u>SOCCER</u></a>	
NO 5	<a href="#"><u>NETBALL</u></a>	
NO 6	<a href="#"><u>BEACH VOLLEYBALL</u></a>	
NO 7	SUMMER FIXTURES YR 7/8/9	
NO 8	WINTER FIXTURES YR 7/8/9	
NO 9	PROPOSED VENUES	
NO 10	<a href="#"><u>FIRST AID</u></a>	
NO 11	<a href="#"><u>INSTRUCTIONS TO UMPIRES/REFEREES</u></a>	
NO 12	<a href="#"><u>GAMES PROCEDURES AND ETIQUETTE (BEHAVIOUR CODES)</u></a>	
NO 13	TEAM NOMINATIONS	
NO 14	<a href="#"><u>CODES OF CONDUCT</u></a>	
NO 15	<a href="#"><u>SCHOOL CONTACTS/VENUE LOCATIONS</u></a>	
NO 16	<a href="#"><u>WORKING WITH CHILDREN LEGISLATION</u></a>	
NO 17	<a href="#"><u>SASJ SPORTS UNIFORM</u></a>	
NO 18	<a href="#"><u>SCORESHEETS</u></a>	

---



---

**ASSOCIATED & CATHOLIC COLLEGES  
OF  
WESTERN AUSTRALIA  
"SOUTHERN ASSOCIATED SCHOOLS JUNIOR"**

**1. AIM**

It is the aim of the SOUTHERN ASSOCIATED SCHOOLS JUNIOR, as a Sub-Association of the Associated & Catholic Colleges, to provide an interschool sporting competition, promoting participation, sportsmanship, leadership and socialization amongst students.

**2. INVOLVEMENT/FIXTURES**

- SASJ is divided into SASJ East and SASJ West geographical alignment. Both groups play the same sports/grades and play crossover finals as applicable in summer and winter.
- Separate boys and girls, teams in year groups, which includes Years 8/9 combined (summer & winter - Terms 1 & 2) and Years 7 combined (summer & winter - Terms 1 & 2).
- Year 10 Boys Basketball and Girls Beach Volleyball (Term 1) & Year 10 Girls Netball and Boys Beach Volleyball (Term 2).

**It is the policy of the ACC that students competing in ACC sport must be under 19 years of age as of 31st December. Students who have turned 19 years of age are not permitted to participate in ACC sport. It is also ACC policy that student participation is limited to "secondary school students" and that the minimum level for participation is enrolment in Year 7.**

**3. PARTICIPATING SCHOOLS**

<b>SCHOOLS</b>	<b>Yr. 7 Summer (T1)</b>	<b>Yr. 8/9 Summer (T1)</b>	<b>Yr. 7 Winter (T2)</b>	<b>Yr. 8/9 Winter (T2)</b>	<b>Yr.10 Boys Basketball/Girls Beach Volleyball (T1)</b>	<b>Yr.10 Girls Netball/Boys Beach Volleyball (T2)</b>
<b>SASJ EAST</b>						
Carey Baptist College	✓	✓	✓	✓	✓	✓
John Wollaston Anglican School	✓	✓	✓	✓	✓	✓
Lumen Christi College	✓	✓	✓	✓	✓	✓
St Norbert College	✓	✓	✓	✓	✓	✓
Ursula Frayne Catholic College	✓	✓	✓	✓	✓	✓
<b>SASJ WEST</b>						
CBC Fremantle	✓	✓	✓	✓	✓	✓
Corpus Christi	✓	✓	✓	✓	✓	✓
Emmanuel Catholic College	✓	✓	✓	✓	✓	✓
Kennedy Baptist College	✓	✓	✓	✓	✓	✓
Mercedes College	✓	✓	✓	✓	✓	✓
Seton Catholic College	✓	✓	✓	✓	✓	✓

Update 1 for 2021

#### 4. CONTACTS

##### SASJ East:

SCHOOL	ADDRESS	TELEPHONE	TELEPHONE PE OFFICE
Carey Baptist College (Harrisdale)	51 Wright Road, Harrisdale 6112	9394 9111	9394 9127
John Wollaston ACS	Cnr Lake & Centre Road, Camillo 6111	9495 8100	9495 8145
Lumen Christi College	Station Street, Martin 6110	9394 9300	9398 6034
St Norbert College	Treasure Road, Queens Park 6107	9350 5433	
Ursula Frayne Catholic College	15 Duncan Street, Victoria Park 6100	9470 0900	9470 0967

SCHOOL	SPORT COORDINATOR	TELEPHONE	EMAIL
Carey Baptist College (Harrisdale)	Chris Bolton	0418 988 327	cbolton@carey.wa.edu.au
John Wollaston ACS	Claire D'Vaz	0434 980 274	CDvaz@jwacs.wa.edu.au
Lumen Christi College	Josh Ainsworth	0430 595 216	joshua.ainsworth@cewa.edu.au
St Norbert College	Ryan Godfrey	0466 098 021	rgodfrey@norbert.wa.edu.au
Ursula Frayne Catholic College	Danielle Griffiths Jodie Walsh	0402 062 347	danielle.griffiths@ufcc.wa.edu.au jodie.walsh@ufcc.wa.edu.au

##### SASJ West:

SCHOOL	ADDRESS	TELEPHONE	TELEPHONE PE OFFICE
CBC Fremantle	Ellen Street, Fremantle 6160	9336 2700	
Corpus Christi College	Murdoch Drive, Bateman 6150	6332 2500	
Emmanuel Catholic College	122 Hammond Road, Beeliar 6164	9414 4000	
Kennedy Baptist College	Farrington Road, Murdoch 6150	9314 7722	
Mercedes College	86 Victoria Square, Perth 6000	9323 1323	
Seton Catholic College	Marchant Road, Samson 6163	9314 1816	

SCHOOL	SPORT COORDINATOR	TELEPHONE	EMAIL
CBC Fremantle	Troy Mollica	0413 577 652	troy@cbcfremantle.wa.edu.au
Corpus Christi College	James Howard	0439 903 992	james.howard@cewa.edu.au
Emmanuel Catholic College	Jarrod Parry	0432 282 507	jarrod.parry@cewa.edu.au
Kennedy Baptist College	Karina Podmore	0447 447 351	kpodmore@kennedy.wa.edu.au
Mercedes College	Natalie Munro	0411 232 796	nmunro@mercedes.wa.edu.au
Seton Catholic College	Renea Mayer	0401 630 245	renea.mayer@cewa.edu.au

#### 5. MEETINGS

5.1 Meetings will be convened at the following levels:

- 5.1.1 SASJ Sport Coordinators only – **St Norbert 8.00am Wednesday** ideally before the start of summer and winter season (**Term 1: Wk. 2, 10 February 2021 and Term 2: Wk. 2, 28 April 2021**). *Corpus Christi is often used as central meeting point – host school to liaise.*

## Update 1 for 2021

- 5.1.1.1 Before all SMC meetings where applicable, to be coordinated with current SAS meeting.
- 5.1.1. Principals and Sport Coordinators combined (only as required)  
(Term 1: Wk. 2, 10 February 2021 and Term 2: Wk. 3, 28 April 2021).
- 5.1.2. Principals, on a 'needs' only basis.
- 5.2 The Principal of the HOST school will chair combined meetings, whilst the Sports Coordinator is to act as minute's secretary and is responsible for agendas and minutes.
- 5.3 The Sports Coordinator of the HOST school chairs the SASJ Sports Coordinators meetings and is responsible for agendas and minutes.
- 5.4 Minutes derived from all meetings are to be circulated within one week of the meeting.
- 5.5 Schools must ensure they have representation at all levels of meeting.

## 6 SPORTS (Minimum commitment): One team for each of the following sports.

SUMMER	BOYS		GIRLS	
YR 8/9	Super 8's	Touch	Basketball	Touch
YR 7	Super 8's		Basketball	
YR 10	Basketball		Beach Volleyball	

WINTER	BOYS		GIRLS	
YR 8/9	Basketball	Soccer	Netball	Soccer
YR 7	Basketball		Netball	
YR 10	Beach Volleyball		Netball	

## 7 DAYS OF PLAY

Year 7, 8/9 & 10 – Wednesday - (summer and winter)

## 8 HOURS OF PLAY: *normal time 4.00pm – 5.00pm*

- 8.1 All games MUST have a minimum of at least 40 minutes playing time (up to 5.15pm) to constitute a match. Quarter and half time breaks are not to be counted within the playing time.
- 8.2 Specific playing times for individual sports are outlined within those charter rules.
- 8.3 Start/Finish Time:
  - 8.3.1 All games to commence promptly at 4.00pm and where possible conclude by 5.00pm. Each school needs to carefully assess their school finish time and travel arrangements. If it is anticipated that arriving for a 4.00pm start is problematic then Principals should consider options to accommodate an early finish for staff and students involved.
  - 8.3.2 The latest start time is 4.20pm.
- 8.4 Warm Up: Both teams must arrive at the venue at least 10 minutes prior to start time i.e. 3.50 pm to commence warm-up.
- 8.5 In the event of a late start to a fixture, due to unforeseen circumstances, the playing time for that fixture MUST be a minimum of 40 minutes (up to 5.15pm) to constitute a match.
- 8.6 If it is not possible to complete 40 minutes of playing time up to 5.15pm, due to a late start, then the offending team will forfeit the match.
- 8.7 In the case of a match forfeit due to a late start, a 'social' match will still be played but the playing time will be reduced by mutual agreement between coaches ensuring equal half playing periods and a 5.15pm finish. The result will be invalid.
- 8.8 Forfeits: In the event that a match is to be forfeited due to late arrival, then the forfeit must be 'declared' before the start of the match. The forfeit is to be declared in the first instance by the coach of the offending team, if not then by the umpire/referee, if not then by the non-offending coach and failing this the home team Sports Coordinator. If the forfeit is not 'declared' before the match then the result will stand.
- 8.9 Schools MUST ensure that they educate staff, students & outside coaches of forfeit clause 8.8 above, to ensure that this rule is implemented in the right spirit.
- 8.10 Finish Time: all matches MUST finish no later than 5.15pm to ensure adequate time for the return journey to schools.

## 9. GENERAL CONDITIONS OF PARTICIPATION

### 9.1 Dress

For all sports, players dress standards must be consistent, and in line with the traditional expectations for that sport. Tracksuits are NOT acceptable items to be worn during games. In extreme adverse climatic conditions, the coaches can convene and if agreed, tracksuit tops may be worn, but NOT bottoms. In addition, only Goalkeepers in soccer may wear tracksuits or part thereof. Hats should be encouraged.

- 9.1.1 A bonus point system will operate where a team is awarded an additional point for all players correctly attired in the school sports uniform. The umpire in consultation with the coaches of each team shall confirm the bonus points immediately **before** the fixture has started. Coaches must write the bonus point on the scorecard and then umpires sign. Teams who forfeit matches cannot claim a bonus uniform point but the team, which wins on a forfeit, can claim the bonus point.

### 9.2 Staffing

- 9.2.1 Suitable teaching staff are to be assigned a coaching or managing task by the Principal in consultation with the Sports Coordinator. Each team is to be accompanied by a teacher as authorization by the Principal.
- 9.2.2 Where possible schools should always attempt to place individuals with knowledge of that specific sport as the coach or manager.
- 9.2.3 If necessary, qualified (in the estimate of the Principal and Sports Coordinator) non-staff adults (i.e. parents or past students) may be authorised by the Principal to coach teams (assuming the presence of a staff manager). Individual schools should be aware of their “Duty of Care”, and ensure the presence of staff with each team.
- 9.2.4 Duties of scorer, timer, linesperson and boundary umpires are carried out by competent reserves or suitable persons nominated by the Coach/Manager.
- 9.2.5 Each school engages all necessary staff and meets its own cost in this regard.
- 9.2.6 Staff authority:  
Staff from both schools engaged in a fixture, have the authority to address and or discipline students from the opposite school. Where possible, staff should consult with and seek permission from each other before disciplining students from an opposing school.
- 9.2.7 Staff from all teams are to submit signed scorecards (by both coaches) to the Sports Coordinator who is responsible for all results. The ACC office may request copies of results from teams to verify scores in the event of a dispute/query. The Sports Coordinators will keep all records for the duration of both the summer and winter seasons for the year.
- 9.2.8 Staff from both teams are to agree on forfeits and uniform points before the start of play. This information is to be clearly indicated on the scorecard.

### 9.3 HOST School

The Chairpersons for the combined Principals and Sports Coordinators, and the separate Sports Coordinators meetings are duly elected as follows:

<b>2008</b>	John Wollaston	<b>2021</b>	<b>St Norbert</b>
<b>2009</b>	Ursula Frayne	<b>2022</b>	John Wollaston
<b>2010</b>	Seton	<b>2023</b>	Ursula Frayne
<b>2011</b>	Emmanuel	<b>2024</b>	Seton
<b>2012</b>	Carey	<b>2025</b>	Emmanuel
<b>2013</b>	Corpus Christi	<b>2026</b>	Carey
<b>2014</b>	St Norbert	<b>2027</b>	CBC Fremantle
<b>2015</b>	John Wollaston	<b>2028</b>	Lumen Christi

## Update 1 for 2021

<b>2016</b>	Ursula Frayne	<b>2029</b>	Mercedes
<b>2017</b>	Seton	<b>2030</b>	Corpus Christi
<b>2018</b>	Emmanuel	<b>2031</b>	St Norbert
<b>2019</b>	Carey	<b>2032</b>	John Wollaston
<b>2020</b>	Corpus Christi	<b>2033</b>	Ursula Frayne

### 9.4 Umpires/Referees

- 9.4.1 Where possible, the home team provides ALL referees/umpires for all home games (2 per sport, soccer will be the one central referee). Both home and away teams are to supply a linesman for soccer and a scorer for basketball.
- 9.4.2 Where possible schools should use accredited umpires for all SASJ sport fixtures. Schools may use competent senior students to perform umpiring duties only at the discretion of the Sport Coordinator.
- 9.4.3 SASJ Basketball: Two (2) accredited paid referees will be sourced by home school for all Year 8/9 and Year 10 games. One (1) accredited paid referee will be sourced by home school for all Year 7 games. Upper school students may be used as a second referee as determined by Sport Coordinator. Basketball Referees to be sourced from accredited agencies such as Reffing Hoops, Sport Staff One, and Basketball WA.
- 9.4.4 Indoor Beach Volleyball will be umpired by teacher/coach accompanying team. Opposition coach will be scorer and be used to assist the “central timing” of the 3 x 15-minute sets.
- 9.4.5 Individual schools should be aware of their “Duty of Care” when providing non-accredited officials.
- 9.4.6 Each school engages all necessary officials and meets its own cost in this regard.

### 9.5 Interchange/Substitution:

In order to encourage maximum participation, there are no limits on the number of substitutions allowed during a game. However, all substitutions must be directed through the referee or umpire.

### 9.6 Send Off Rule

If a student is sent from the field of play in any SASJ sport, he/she is not permitted to return to the field of play for that game. However, that player may be replaced immediately by one of the reserve players. The umpire/referee should indicate the reason for the sendoff to the team coach and the player concerned when it is convenient. If the incident is of a serious nature (i.e. violence, vilification, unruly behaviour), a written report is to be made by the umpire or coach and copies sent to the Sports Coordinators of each school. The Sports Coordinators should then take appropriate action.

*REFER TO, APPENDIX 21 “INSTRUCTIONS TO UMPIRES/REFEREES.”*

### 9.7 Points

WIN	-	4 Points	
LOSS	-	1 Point	
DRAW	-	2 Point	
FORFEIT	-	Winning Team	- 4 Points
	-	Losing Team	- 0 Points
INCORRECT UNIFORM – Minus 1 Point			

Teams with equal points on weekly and final competition ladders, will be separated in the following manner on the ladder:

Basketball	-	Points for and against (point difference)
Touch	-	Tries for and against (try difference)
Soccer	-	Goals for and against (goal difference)
Netball	-	Goals for and against (goal difference)
Super 8's Cricket	-	Runs for and against (run difference)
Indoor Beach Volleyball	-	Sets for and against, then points for and against

## Update 1 for 2021

In the case of incomplete or extended Round Robin fixtures, a match ratio may be used to determine the final ladder and premiership teams.

### 9.8 Forfeits

Early communication is essential to alleviate problems arising from forthcoming forfeits. Full Forfeit (no game to be played) should ideally be communicated by 11.00 am on the day of the fixture to give opposition school as much notice as possible. However, coaches can forfeit prior to the match and still play a scratch match/friendly on game day. Coaches and Sport Coordinators must have this conversation prior to the game starting. The latest time for a full forfeit (no game) to be communicated is 11.00am on the day of the fixture. Coaches and Sport Coordinators must have this conversation prior to the game starting.

A team causing the forfeit will receive 0 points, whilst the opposition receives 4 points for that fixture.

To assist with the separation of teams with equal points on weekly and final competition ladders, the team winning a forfeit, will be awarded a predetermined score for that particular sport. The team losing will be awarded the reverse of the predetermined score (see table below).

When entering a forfeit into *Go Jaro* click underneath the relevant school name, tag the circle which reads 'Forfeit this game' then click submit. *Go Jaro* will then calculate points automatically. **When entering the score, please refer to the Mercy Rule Margin Table (page 10) and enter that result.**

Please see the predetermined scores for the summer and winter SASJ sports table below

Summer			
	For	Ag	
Basketball	20	0	
Touch	5	0	
Super 8's	80	0	
Beach Volleyball	3	0	75-0

Winter			
	For	Ag	Games
Soccer	4	0	
Netball	15	0	
Basketball	20	0	
Beach Volleyball	3	0	75-0

### 9.9 Protective Equipment

It is essential that all protective equipment is worn at all times and that the equipment is maintained at optimal levels. Students are to be advised of the requirement to use appropriate protective equipment during all games. Shin pads are compulsory for soccer.

### 9.10 Reporting of Results

Results of all fixtures are reported using the GoJaro on-line results system through the ACC web site. The home team enters all results in GoJaro within 24 hours of the fixture. For SASJ the home team for result entry will be the home team in the fixtures. Once all results are entered the home scorer must go to the scoreboard and check that results are displaying correctly.

It is important that a copy of this page is printed for your records. In the event of a problem with scores, the ACC may ask for a copy of these results.

The away team needs to check all results within 48 hours from when the home team notifies that results have been entered. If there are any errors, the home team has one week to correct them.



## Update 1 for 2021

After one week, the fixture will be locked and only ACC administrators are able to make any required changes. The away team must check results within 72 hours otherwise results entered by the home team will stand. Failure of the home team to comply with this condition will invoke a penalty of 1 point for the "responsible" team involved for that fixture.

It is suggested that the GoJaro system be promoted to coaches, students and parents and that the ladders be used to motivate individuals, teams and coaches/managers throughout the season.

If for any unforeseen circumstance the results cannot be entered by the home team using GoJaro then the away team should enter the results. If GoJaro is down and results cannot be entered on-line then the results can be emailed to the ACC.

**N.B. Results reported are considered final once confirmed on-line - both teams' coaches/managers and captains must settle scoring discrepancies before scorecards are signed.**

**Uniform Penalty Point:** It is **not** possible for SASJ school scorers to assign the uniform penalty point when entering results in Go Jaro. Home team scorers are to send any uniform penalties to the ACC when they email the ACC to advise that scores have been entered in Go Jaro. The ACC office will then enter any uniform penalties.

Staff from all teams are to **submit signed scorecards** (by both coaches) to the Sports Coordinator who is responsible for all results. The ACC office may request copies of results from teams to verify scores in the event of a dispute/query. The Sports Coordinators will keep all records for the duration of both the summer and winter seasons for the year.

### 9.11 Fixtures

Scheduled on a home and away basis (whilst the boys play at home, the girls play at the opposing location and vice versa).

*REFER: APPENDIX 6 AND 7 "SUMMER AND WINTER FIXTURES".*

### 9.12 Venues

- 9.12.1 It is the responsibility of the school providing the venue to ensure that all grounds/courts are clearly/correctly marked. Grounds/courts should be adequately maintained so as to provide a safe playing area. This is the same with central venues in use.
- 9.12.2 It is the expected etiquette of the home school to have a staff member available to meet and greet the away on school upon their arrival at the venue. The home school staff should brief the away school as to the location of the drinking water, toilets/change rooms, emergency telephone and first aid facilities (if available).

### 9.13 Final Team Placings and Extra Time Requirements

Final team placings are determined by position on the East and West SASJ ladders at the end of the season followed by any SASJ Crossover Finals between East v West SASJ (sample below).

SASJ 1<sup>ST</sup> place playoff: 1Ev1W

SASJ 3<sup>rd</sup> place playoff: 2Ev2W

SASJ 5<sup>th</sup> place playoff: 3Ev3W

SASJ 7<sup>th</sup> place playoff: 4Ev4W

SASJ 9<sup>th</sup> place playoff: 5Ev5W

Extra Time requirements may be needed to help determine final placings and should follow the below table if scores are level at the completion of full time:

Sport	Extra Time Requirements
Basketball	Extra time 3 minutes – no timeouts or breaks. If scores are still level after 3 minutes – next point wins (including free throw)
Touch	Overtime to start straight away – First try scored wins. Each team must remove a player from the field every 1 minute so that playing numbers are reduced until a score occurs.

## Update 1 for 2021

Cricket	Overall runs firstly and then overall wickets lost to be used secondly as the tiebreaker. If both runs and wickets lost are equal the game is deemed tied – joint winners.
Soccer	No Extra time. Straight into a 3 v 3 penalty shootout. If scores are still tied after the 3/3 penalty kicks the penalties, then continue to sudden death penalties 1 for 1 until deadlock broken.
Netball	Extra time 3 minutes – no breaks. If scores are still level after 3 minutes – next goal wins.
IBV	Not applicable – overall sets then overall points used to help decide final ladder.

### 9.14 Trophies

A single plaque will be awarded to each school acknowledging any premiership teams for that school in that year. Individual team plaques will not be awarded.

### 9.15 Weather Policy

#### 9.15.1 Hot Weather

- Home school contacts weather bureau by 11.30am. If the weather conditions are extreme (high temp & high humidity), the home school cancels and informs opposition school, host coordinator and the ACC by 12 noon. Use discretion, particularly if games can be played with modification of playing time etc. to achieve a result.
- Team coaches: Duty of care to students is of paramount importance and individual coaches/managers always have the power to cancel an individual match if they believe that student health and safety is at risk. Where possible they should consult with the home school sports coordinator.
- The provision of water is the responsibility of the individual players and the team manager, not the home school.
- In the event that a school is the home side, then it is their responsibility to provide adequate shade shelter for teams if no natural shade is present.
- Where possible the following guidelines should be followed when matches are played under hot/humid conditions:
  1. *Use venues that are: indoors or shaded. Outside hard courts should not be used due to increased radiant heat.*
  2. *Normal sun protection measures (hats/sunscreen) should be strictly followed*
  3. *Reduce match length or period length*
  4. *Increase player rotation through the bench*
  5. *Provide frequent rest/drink breaks*
  6. *Ensure that rest breaks are in shaded areas.*
  7. *Ensure students drink water BEFORE/DURING/AFTER the match*
  8. *Use common sense in hot/humid conditions and remember that student welfare always comes first.*

#### 9.15.2 Winter (severe) Weather

At 11.30am, Sports Coordinators to consult and if the consensus is a disaster (lightning and hail) then games are cancelled. If doubtful, teams show up and a decision is made by the home SC. In the case of inclement (wet) weather, teams show up at the venue and a decision is made by the home SC on site as to whether games continue. Winter fixtures should only be cancelled if the weather is severe (lightning/hail/wind) and poses a risk to student well-being – rain itself is not severe and cause for cancellation. In extremely cold conditions, the coaches may convene and, if agreed, tracksuit tops may be worn, but not bottoms.

- Current weather forecasts can be obtained at:

<http://www.bom.gov.au/weather/wa/>

## Update 1 for 2021

### 9.15.3 Cancelled Fixtures Due to Weather

It is in the spirit of the SASJ competition that schools canceling matches due to bad weather should not be penalized on the ladder. In situations where some games are cancelled at one venue and played at other venues the policy is:

- In fixtures where games are played at one venue and not at another in a like sport, ALL results, at all venues in that sport are null and void.
- When home teams cancel all games due to weather only those sports affected by weather should be abandoned and any indoor games should still go ahead as normal. Points for games played indoors in these cases will count as long as all fixtured games were played at all venues.
- If fixtures are cancelled all SASJ schools are to be notified so that only relevant scores are entered into GoJaro for that round. ACC is to be notified so cancelled fixtures can be displayed as cancelled in GoJaro.

### 9.16 Uneven Contests- Mercy Rule

The “Mercy Rule” should be considered more a philosophy than a rule. The aim of the recommendation is that if any game is competitively uneven, the coaches should modify or adapt the game to make it a positive playing experience. This change to the game should be instigated by the coaches and not the referees. Any changes to the match should be made in a subtle way so as not to embarrass or mock the losing school. Some suggestions for modifications include:

- winning team taking off better players and playing reserves
- reduce playing numbers for both teams if opposition is short
- winning team offering to have some players play for the opposition
- winning team changing team positions such as swapping attackers with defenders
- winning team to instruct players to pass the ball more often before taking a shot
- winning team reducing the defensive pressure on the opposition
- winning team offering to mix players between teams.

At the point when the maximum margin occurs (refer table below), coaches concur and modify the game. The result at that point will be recorded and points will be awarded to the winning school. Sports Coordinators should also change score cards post match if the coaches have not listed the maximum allowable score as the result. Scores greater than the maximum allowable score should not be entered into iScore.

This “mercy rule” scoring is to be implemented for the sports listed below.

#### **MAXIMUM MARGIN TABLE – MATCHING MERCY RULE**

<i>Sport</i>	<i>Maximum Margin</i>
Cricket	80 Runs
Touch Rugby	5 tries
Basketball	20 points
Indoor Beach Volleyball	3 sets
Soccer	4 goals
Netball	15 goals

**EXAMPLE:** Once a score of 4 – 0 or 5 – 1 (margin reaches 4 goals) reached in soccer, that score is recorded as the official result and the coaches are to then consult and adjust match conditions. Any changes to the score after this point are not recorded.

## Update 1 for 2021

### Appendix 1

TO "SOUTHERN ASSOCIATED JUNIOR SCHOOLS"

SUMMER SPORT - **BASKETBALL** (GIRLS) & WINTER SPORT – **BASKETBALL** (BOYS)

#### SPECIFIC CONDITIONS OF PLAY AND RULES

##### **TEAMS**

Each school fields one (1) team for each gender in the Year 7 and 8 & 9 competition. Each school fields one (1) team for Year 10 Boys basketball.

Teams are to consist of 5 on-court players with up to five (5) interchange players. Minimum number of player is five (5).

##### **DRESS**

Basketball strip with numbered singlets from 4 to 15. Non marking shoes are to be worn in games played indoors. Mouth guards are highly recommended.

##### **START TIME**

4.00 pm – 5.15 pm

##### **DURATION OF PLAY**

Games are to consist of two (2) x 20 minute halves with 5 minutes changeover at half time.

Year 7/8/9 games are to be played in full.

In the event of an unscheduled reduction in the time available to play, the halves are to be reduced accordingly.

##### **RULES**

The rules of the Australian Basketball Association will apply except as stated otherwise in this document.

The game clock will not be stopped for any reason.

##### **SUBSTITUTES**

Are to be made via the referee.

##### **TIME OUTS**

There are no time-outs in the last 5 minutes.

##### **EQUIPMENT**

The home team is to provide the match ball.

Ball sizes                -                All years                -                Boys - size 7                Girls – Size 6

Players should be advised to wear mouth guards.

##### **SCORECARDS**

Scorers from both teams must sit together and compare scores throughout the game.

Scorecards are to be signed by the umpire/s or referee/s and captains of each team at the conclusion of the fixture. It is assumed that scoring discrepancies are settled immediately at the conclusion of the fixture should they occur, and that results reported to the ACC office are final.

A bonus point system will operate where a team is awarded an additional point for all players correctly attired in the school sports uniform. The umpire in consultation with the coaches of each team shall confirm the bonus points immediately **before** the fixture has started. Coaches must write the bonus point on the scorecard and then umpires sign. Teams who forfeit matches cannot claim a bonus uniform point but the team, which wins on a forfeit, can claim the bonus point.

## Update 1 for 2021

### Appendix 2

TO "Southern Associated School"

SUMMER SPORTS - **TOUCH** (BOYS AND GIRLS)

#### SPECIFIC CONDITIONS OF PLAY AND RULES

##### TEAMS

Teams are to consist of six (6) players with a maximum of seven (7) interchange players. Subs made via the coach not the umpire.

Minimum number of players is five (5).

##### DRESS

Players are to be dressed in school sports uniform which must be numbered or wear numbered bibs.

##### START TIME

4.00 pm – 5.15 pm

##### DURATION OF PLAY

Year 7/8/9 games are to consist of two (2) x twenty (20) minute halves with a five (5) minute break between halves.

##### RULES

Rules are in accordance with the Australian Touch Association Rules Book.

##### SUBSTITUTES

Substitutes are to be made via the sideline. Substitutes must not go on the field until player they are substituting has reached the sideline.

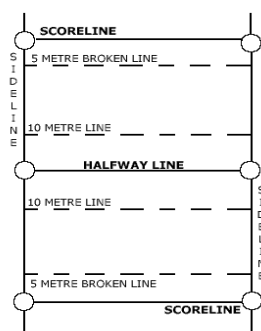
##### EQUIPMENT

The home team is to have suitably sized markers of a distinguishing colour and made from a safe and pliable material which are to be positioned at the intersection of sidelines and score lines (total of fourteen (14) markers). See diagram below for field layout.

##### SCORECARDS

Scorecards are to be signed by the referee and coaches at the conclusion of the fixture. It is assumed that scoring discrepancies are settled immediately at the conclusion of the fixture and that results reported to the ACC office are final.

A bonus point system will operate where a team is awarded an additional point for all players correctly attired in the school sports uniform. The umpire in consultation with the coaches of each team shall confirm the bonus points immediately **before** the fixture has started. Coaches must write the bonus point on the scorecard and then umpires sign. Teams who forfeit matches cannot claim a bonus uniform point but the team, which wins on a forfeit, can claim the bonus point.



## Update 1 for 2021

### [Appendix 3](#)

#### TO "SOUTHERN ASSOCIATED JUNIOR SCHOOLS" SUMMER SPORT – **SUPER 8'S** (BOYS)

#### SPECIFIC CONDITIONS OF PLAY AND RULES

##### TEAMS

Teams are to consist of EIGHT (8) players.

##### DRESS

Players are to be dressed in school sports uniform.

##### START TIME

4.00 pm – 5.15 pm

##### DURATION OF PLAY

Year 7/8/9 games are to consist a maximum of 8 six-ball overs bowled by each side. A team may not declare its **innings** closed.

##### RULES & PLAYING CONDITIONS

1. **Each game** to be played between two teams of eight players with the **home team batting first**.
2. **A game** consists of a maximum of 8 (six-ball) overs bowled by each side with a maximum of six (6) balls per over.
3. A team may not declare its **innings** closed.
4. Each person of the **fielding side** shall bowl one (1) over each. Batting pairs shall bat for two (2) overs.
5. The **wicketkeeper** shall be permitted to bowl.
6. **Bowlers** are limited to a 10-metre run-up. (limit also applies to the wicketkeeper's position)
7. **Boundaries**
  - 4 runs scored as normal for a ball running along the ground or bouncing through the boundary.
  - 6 runs scored for any ball passing over the boundary on the full.
8. A **wide ball** shall count as 2 extra runs and **no** extra ball shall be bowled  
Note: bowling width is 24 inches (60cm) from middle stump on the off side and 18 inches (45cm) on the leg side.  
Upon the call of "**wide**" the ball shall remain live. (i.e. batsmen can run)
9. **No - ball**  
A no - ball shall count as 2 extras and **no** extra ball shall be bowled.  
Any runs will be credited to the batting team in addition to the extras.  
No – ball:  
Bouncing above shoulder height.  
Full toss above waist height.  
Wicketkeeper is more than 20 metres from the stumps. (strikers end)  
Ball bounces more than once.
10. **Retirement**  
Batsman bat for two (2) overs and then swap with new pair ensuring all players bat.
11. **Batting Penalty**  
When a wicket is taken (bowled, caught, run out or stumped) the batting team will be penalised three (3) runs for each wicket taken.

## Update 1 for 2021

### 12. Fielding Restrictions

- No more than 4 fielders on the leg side.
- Pitch length is standard.
- For the first 7 overs:

There must be 2 stationary fieldsmen within 15m of the striker.

- The boundaries shall have a radius of 40-50 metres from the centre of the wicket (i.e.: 80-100m diameter across the full field)
- 

### EQUIPMENT

*All players must wear protective equipment as prescribed for Super 8's Cricket. Wicket keeper is to wear gloves.*

#### *Batters*

- *Pads and gloves*
- *Helmet with grill*
- *Groin Protector*

#### *Wicketkeeper*

- *Gloves*
- *Helmet and grill*
- *Pads*

## **Ball to be used: Kookaburra Softaball.**

Home team is to provide wickets, all protective equipment and boundary lines.

Please be mindful of varying sizes of student's participating when putting kits together for games

Each team is to provide an umpire.

### SCORESHEETS

Scoresheets are to be signed by the umpire and coaches at the conclusion of the fixture. It is assumed that scoring discrepancies are settled immediately at the conclusion of the fixture and that results reported to the ACC office are final.

A bonus point system will operate where a team is awarded an additional point for all players correctly attired in the school sports uniform. The umpire in consultation with the coaches of each team shall confirm the bonus points immediately **before** the fixture has started. Coaches must write the bonus point on the scorecard and then umpires sign. Teams who forfeit matches cannot claim a bonus uniform point but the team, which wins on a forfeit, can claim the bonus point.

## Update 1 for 2021

### [Appendix 4](#)

#### *TO "SOUTHERN ASSOCIATED JUNIOR SCHOOLS" WINTER SPORTS - SOCCER (BOYS & GIRLS)*

#### SPECIFIC CONDITIONS OF PLAY AND RULES

##### **TEAMS**

Teams are to consist of eleven (11) players with a maximum of four (4) interchange players. Minimum number of players is seven (7).

##### **DRESS**

Players are to be dressed in school sports uniform.

##### **START TIME**

4.00 pm – 5.15 pm

##### **DURATION OF PLAY**

Year 7/8 & 9 games are to consist of two (2) x twenty (20) minute halves with a 5 minute break at half time. Games are to be played in full.

##### **RULES**

Rules are in accordance with the Australian Soccer Federation.

##### **SUBSTITUTES**

Substitutes are to be made via the referee. Substitutes may return to the field.

##### **EQUIPMENT**

*All players must wear shin pads. Goalkeepers are advised to wear gloves.*

Home team is to provide 2 goal nets and 4 corner flags and set up the field for each match.

Each team is to provide a linesperson with a flag.

##### **SCORECARDS**

Scorecards are to be signed by the referee and coaches at the conclusion of the fixture. It is assumed that scoring discrepancies are settled immediately at the conclusion of the fixture and that results reported to the ACC office are final.

A bonus point system will operate where a team is awarded an additional point for all players correctly attired in the school sports uniform. The umpire in consultation with the coaches of each team shall confirm the bonus points immediately before the fixture has started. Coaches must write the bonus point on the scorecard and then umpires sign. Teams who forfeit matches cannot claim a bonus uniform point but the team, which wins on a forfeit, can claim the bonus point.



## Update 1 for 2021

### Appendix 5

#### TO "SOUTHERN ASSOCIATED JUNIOR SCHOOLS" WINTER SPORT - **NETBALL** (GIRLS)

#### SPECIFIC CONDITIONS OF PLAY AND RULES

##### **TEAMS**

Teams are to consist of seven (7) players with up to five (5) interchange players. Unlimited interchange. Minimum number of players is five (5).

##### **DRESS**

Players are to wear sports uniforms and lettered bibs.

##### **START TIME**

4.00 pm – 5.15 pm

##### **DURATION OF PLAY**

All games are to consist of four (4) x ten (10) minute quarters with no break at quarter and three quarter time (change ends only) and a 5 minute changeover break at half time.

Year 7/8/9 games to be played in full.

##### **RULES**

Rules are in accordance with the Western Australian Netball Association.

##### **SUBSTITUTES**

Advise opposition team players or management.

##### **EQUIPMENT**

Players should be encouraged to wear mouth guards.

##### **SCORECARDS**

Scorecards must be checked for consistency at half time.

Scorecards are to be signed by the umpires and coaches of each team at the conclusion of the fixture. It is assumed that scoring discrepancies are settled immediately at the conclusion of the fixture. Umpires are to coordinate and ensure that they concur on scores at each break. Results reported to the ACC office are considered final.

A bonus point system will operate where a team is awarded an additional point for all players correctly attired in the school sports uniform. The umpire in consultation with the coaches of each team shall confirm the bonus points immediately **before** the fixture has started. Coaches must write the bonus point on the scorecard and then umpires sign. Teams who forfeit matches cannot claim a bonus uniform point but the team, which wins on a forfeit, can claim the bonus point.

##### **UMPIRES**

Host/Home Team is to supply **both** umpires. If senior students (players) umpire they must continue to do so for the entire game.

## Update 1 for 2021

### [Appendix 6](#)

#### TO "SOUTHERN ASSOCIATED JUNIOR SCHOOLS"

#### WINTER SPORT – **INDOOR BEACH VOLLEYBALL (GIRLS & BOYS)**

### SPECIFIC CONDITIONS OF PLAY AND RULES

#### TEAMS

Teams are to consist of six (6) players with a maximum of four (4) substitute players. Minimum team numbers is four (4).

SASJ East Games played at a central venue – Canning Vale Indoor Beach.

SASJ West Games played at a central venue – Fremantle Indoor Beach.

#### DRESS

Players are to dress in school sports uniform, bare feet on court.

#### START TIME

4.00 pm

#### DURATION OF PLAY

Games are to be contested over a set period between 4.00 – 5.00pm. The minimum time required to constitute a match is 30 minutes i.e. 2 sets. Sets will be timed – 15 minutes each set. Short 2-minute timeouts/drink interval will occur between sets.

Set 1: 15 minutes, Set 2: 15 minutes: Set 3: 15 minutes

#### RULES

##### The Game

Indoor Beach Volleyball (IBV) is a game played by two teams on a sand covered volleyball court surrounded by netting, where the ball is played rebound off the nets, with NO outs, therefore the ball is live at all times. The ball may be hit with any part of the body above the waist (no intentional head butting), but each side is limited to three consecutive hits, no player is allowed to make two consecutive contacts.

#### SCORING

Best of three sets (will be used for all SASJ matches): Sets are played to time (15 minutes). The team that is leading at the completion of the time period will be awarded that set. A team wins the match by winning two sets. If a team wins the first two sets, a third set must still be played as this final 3<sup>rd</sup> set may impact final team standings on the ladder. The full must be entered when entering results i.e. 3-0 or 2-1.

##### Points & Service:

- If the serving team wins a rally, it scores a point and continues to serve.

TO WIN A SET: The team which is leading the points at the completion of time (15 minutes). No minimum lead of two points is required. In the case of a 18-18 tie, play is continued with a deciding point to determine who wins the set.

The sets completed at the call of time shall constitute the match. The final match result will be determined by each team's total sets won.

Both 'sets' and total number of points are entered into the results system e.g.

Set 1 won by School A 17 - 12

Set 2 won by School B 16 – 20

Set 3 won by School A 14 – 12

Go Jaro would then show:

<u>School A</u>		<u>School B</u>
2	set	1
47	points	44

## Update 1 for 2021

### Officials

The game is controlled by an umpire/teacher accompanying the team. The opposition coach will then assist by keeping score and keeps the time. In any sport, there are close calls where players will disagree, but the umpire's decision is always final. Any arguing with or abuse directed at an umpire can result in a point reduction, followed by a send off.

### Serving and Positions

- The ball must be served within one metre from the back net and the right hand side net.
- The Server can serve a maximum of 5 serves and then be rotated.
- The ball can be served over arm or under arm.
- The ball must not have contact with any nets whilst being served.
- All players must serve. Players are to rotate clockwise on winning the serve.
- The ball must be set at least once on receiving the serve before returning the ball over the net.

### Ball and Net Abuse

Any kicking of the ball may result in a deduction of two points at the umpire's discretion. Players abusing the nets may be sent off.

### Side and Top Nets

All nets can be used in general play, except when serving the ball, or contact with the top net when it is returned over the centre net to the oppositions side of the Court, this is deemed a foul.

### General Play

- Any contact with the centre net by a player whilst the ball is in play, will result in a foul.
- A block at the centre net is not included as part of the three hits.
- The blocking player is entitled to play at the ball again on the consecutive shot.
- Two hands must be used to be called a block.

### Fouls

THE POINT OR SERVE IS LOST WHEN:

- The ball touches the ground
- Team plays the ball more than three times in succession
- The ball touches a player below the waist
- A player touches the ball twice consecutively (except on a block)
- A player touches the centre net
- The ball touches the top net (except when setting to your own player)
- A player blocks or spikes the ball back over the net off the serve
- The ball does not pass over the net on the serve
- The umpire calls a carry
- A player interferes with an opponent's player
- A player intimidates an opponent or abuses another player
- The serve is made from outside the serving area
- A player kicks the ball
- A player attacking or defending reaches over the net
- A player abuses the umpire
- The ball hits a net when served
- Blood rule - must come off at once

### SUBSTITUTES

On a rotation basis at the change of serve.

### SCORECARDS

The games completed at the call of time shall constitute the "set". The final match result will be determined by each team's total sets won.

NB: Results reported are considered final - scoring discrepancies must be settled by both team's coaches/managers and captains before scorecards are signed.

Update 1 for 2021

**Appendix 7**

*To "SOUTHERN ASSOCIATED JUNIOR SCHOOLS"  
SUMMER FIXTURES - YEARS 7/8/9/10 2021*

**For current fixtures please check the ACC website**  
**<http://www.accsport.asn.au/interschool-sport/sasj/fixtures>**

**Appendix 8**

*To "SOUTHERN ASSOCIATED JUNIOR SCHOOLS"  
WINTER FIXTURES - YEARS 7/8/9/10 2021*

**For current fixtures please check the ACC website**  
**<http://www.accsport.asn.au/interschool-sport/sasj/fixtures>**

**Appendix 9**

*TO "SOUTHERN ASSOCIATED JUNIOR SCHOOLS"  
PROPOSED VENUES*

**For current venues please check the ACC website**  
**<http://www.accsport.asn.au/interschool-sport/sasj/venues>**

## Update 1 for 2021

### Appendix 10

#### *TO "SOUTHERN ASSOCIATED JUNIOR SCHOOLS"*

##### **FIRST AID REQUIREMENTS**

- Each school is responsible for the provision of first aid to their own students.
- Each team should carry their own first aid kit.
- Each group of school teams at a venue should have access to a mobile phone for emergency purposes.
- Each school should have a list of student emergency contact details on hand at both home and away venues if required.
- Home teams should advise the visiting school on arrival the location of; emergency/public telephone, first aid service (if provided), ice or cold packs (if provided), drinking water and toilets.
- The phone contacts of the SASJ school sports coordinators are:

Carey College	Chris Bolton	93949111	0418 988 327
John Wollaston ACS	Claire Bennison	9495 1504	0434 980 274
Lumen Christi	Josh Ainsworth	9394 9300	0430 595 216
St Norbert College	Ryan Godfrey	9350 5433	0466 098 021
Ursula Frayne	Danielle Griffiths	9470 0900	0402 062 347

Corpus Christi College	James Howard	6332 2614	0439 903 992
Emmanuel College	Jarrold Parry	9414 4000	0432 282 507
Kennedy College	Karina Podmore	9314 7722	0447 447 351
Seton College	Renea Mayer	9331 9685	0401 630 245
CBC Fremantle	Troy Mollica	9336 2700	0413 577 652
Mercedes College	Natalie Munro	9323 1323	0411 232 796

## Update 1 for 2021

### [Appendix 11](#)

#### *TO "SOUTHERN ASSOCIATED JUNIOR SCHOOLS" INSTRUCTIONS TO UMPIRES/REFEREES*

##### **Prior to Game**

- Ensure both teams have timekeepers, timing pieces, scorecards and pens, and that they are located in close proximity to one another.  
  
(For football - ensure that goal umpires compare scores at each break.)
- Meet both teams in centre of court/field/oval where they line up opposite each other and shake hands.
- Briefly explain specific rules of note.
- Conduct toss of coin for direction of play.
- In case of inclement weather conduct the 'prior to game' instructions in the most practical and convenient manner possible.
- In case of a late arrival/start pre-determine if there will be a forfeit and the length of time a match will be played.

##### **The Game**

- To enforce the rules of the game.
- To encourage a sense of discipline and cooperation whilst the game is in progress.
- To verbally recognise good play.
- **On ground procedures.**
  - Players sent off, will be off for the rest of the game. Explain the reason for the send off to the coach/manager and player at the first convenient break.

##### **Post Game**

- Direct 3 cheers to each team.
- Check and sign scorecard – COACHES TO SIGN.

**NB: The coach is the key to a team's behaviour on and off the field.**

## Update 1 for 2021

### Appendix 12

#### To “SOUTHERN ASSOCIATED JUNIOR SCHOOLS” GAME PROCEDURES AND ETIQUETTE

##### A. TEAMSMANSHIP:

- To support fellow team members by participating to full capacity.
- To be suitably attired in the appropriate school sporting uniform.
- To promote worthy competition without losing the aspect of enjoyment of participation in a friendly atmosphere.
- To respect the opposition’s involvement as individuals and a team.
- To encourage fair play by abiding with umpiring decisions.
- To assist team managers and coaches by offering organisational assistance where possible.
- To take heed of my school’s ethos while participating.

##### B. PROCEDURE:

- To assist in the preparation of venues for the fixtures.
- Captains and Vice Captains to meet the opposing teams on their arrival and advise them of facility location in addition to specific information regarding the fixture when necessary.
- To cater for the needs of opposing players as occasions arise.
- To encourage social interaction.

Update 1 for 2021

[Appendix 13: Team nominations](#)

**For current nominations please check the ACC website**

<http://www.accsport.asn.au/interschool-sport/sasj/nominations>



[Appendix 14](#)

TO "Southern Associated Schools Junior"

**CODES OF BEHAVIOUR**

## **Associated and Catholic Colleges of Western Australia**

The ACC strives to encourage and support all CAS schools in the running of their Sub Association competition, under the maxim 'Sport in the right Spirit'.

Sport can positively influence a young person's value of physical fitness and a sense of self-worth. This can take place through the opportunity to develop and build personal characteristics such as determination, self-discipline, obedience and team work.

Good sportsmanship is an integral part of all that is best in sport. It includes a generous spirit, true respect for others, graciousness and an ability to resist the temptation of gaining an unfair advantage. Good sportsmanship is an honorable behavior and a valuable life skill both on and off the playing field.

### **Codes of Behaviour**

The following guidelines have been developed to assist everyone involved in ACC sport to promote worthy competition and make it clear what is deemed acceptable behaviour.

All those involved in ACC fixtures such as players, coaches and spectators are required to adhere to these codes.

(ACC Codes of Behaviour have been adopted from the "Aussie Sport – Codes of Behaviour", produced by the Australian Sports Commission and The PSA Code of Behaviour for Sport from the Public Schools' Association of Western Australia)

### **Players Code of Behaviour**

- Respect the rights, dignity and worth of all participants regardless of their gender, age, ability, cultural background or religion.
- Never argue with an official. If you disagree with a decision, speak with your coach and they will deem an appropriate time to communicate the concerns with the umpire.
- Control your temper. Verbal abuse of officials and sledging other players, deliberately distracting or provoking an opponent are not acceptable.
- Work equally hard for yourself and your team. Your team's performance will benefit and so will you.
- Positive and sportsmanlike behavior should be exhibited by extending standard courtesies to the opposing teams. E.g. – applaud good play, thank referees and opposition at the end of the game.
- Treat all participants in your sport, as you like to be treated. Do not bully or use unfair or illegal tactics to gain an advantage.
- Cooperate with your coach, teammates and opponents. Without them there would be no competition.
- Immodest behavior in victory or success is an act of poor sportsmanship and not acceptable.

## **Coaches Code of Behaviour**

- Respect the rights, dignity and worth of every young person regardless of their gender, age, ability, cultural background or religion.
- Remember that young people participate for pleasure and winning is only part of the fun. Ensure the time players spend with you is a positive.
- Never ridicule or yell at a young player for making a mistake or not winning.
- Be reasonable in your demands on players' time, energy and enthusiasm.
- Set an example to your students by always playing by the rules and in the spirit of your sport. Expect and encourage your players to do the same.
- Ensure that equipment and facilities adhere to the charter recommendations and meet all safety standards.
- Display control, respect and professionalism to all involved. Encourage your players to do the same.
- Do not publicly question an umpire /referees decision and avoid blaming a team's defeat on 'poor umpiring'.
- Any scoring or umpiring discrepancies between teams needs to be settled before schools part ways from the playing venue. If coaches are in doubt, the Sport Coordinator of the Home team needs to be advised and take on the role of the mediator using the charter to assist in coming to a mutual decision.
- Establish and foster professional relationships with the coaches of opposing teams.
- Any physical contact with a young person should be appropriate to the situation and necessary for the player's skill development

## **Schools Code of Behaviour**

- Heads of Sport, Sport Coordinators and teachers in charge of individual sports aim to foster sportsmanlike behavior and positive attitudes amongst their players, supporters and coaches.
- Sport Coordinators must communicate and advise the relevant Principal and Sport Coordinators if there are concerns with players or spectators not meeting the ACC Codes of Behaviour. This needs to be addressed immediately and confidentially in the interests of the players, coaches and the ongoing competition.
- Host schools must ensure playing grounds are safe and equipment and facilities meet acceptable standards as outlined in the charter.
- Sport Coordinators support coaches and officials to highlight appropriate behaviour and skill development, and endeavor to improve the standards of coaching and officiating.
- Ensure that everyone involved in ACC events emphasise fair play and support the ACC maxim of 'Sport in the Right Spirit'
- Make the ACC Codes of Behaviour available to the necessary people. This should include spectators, officials, coaches, players and other persons you deem necessary
- Make it clear that any form of physical or verbal abuse or intimidation of players, coaches, spectators or officials is completely unacceptable and will result in disciplinary action if deemed necessary.

## **Parents and other spectators Code of Behaviour**

- Children appreciate the presence and support of their parents. Accordingly, always set an example of good sportsmanship and give enthusiastic, but not excessive or inappropriate support. Applaud good performance and efforts from all individuals and teams. Congratulate all participants on their performance regardless of the game's outcome.
- Host school parents are invited to assume responsibility for making visiting parents feel welcome.
- Respect the rights, dignity and worth of every young person regardless of their gender, age, ability, cultural background or religion.
- Parents should not under any circumstances approach or give advice during a match to coaches, umpires/ referees or players.
- Respect the decisions of officials and encourage players to do the same by following the rules and the officials' decisions.
- Never ridicule or scold a young player for making a mistake.
- Condemn the use of violence in any form, whether it is by spectators, coaches, officials or players.
- Do not use foul language, sledge or harass players, coaches or officials.

## **Officials Code of Behaviour**

- Give all young people a 'fair go' regardless of their gender, age, ability, cultural background or religion.
- Compliment and encourage all participants and emphasise the spirit of the game rather than the errors.
- Be consistent, objective and courteous when making decisions.
- Condemn unsporting behaviour and promote respect for all players. Communicate with the coach concerned to advise them of any inappropriate behavior.
- Keep up to date with the latest trends in officiating and the principles of growth and development of young people.
- Remember, you set an example. Your behaviour and comments should be positive and supportive.
- Place the safety and welfare of the participants above all else.
- If you have any concerns regarding the credibility of the game communicate your concern with the coaches and seek assistance from the Host Sport Coordinators.
- Any form of intimidation, abuse or persuasive advice from players, coaches or spectators will not be tolerated. Advise the Sport Coordinator at the host school if you need support to resolve the matter. Feedback of this nature must be reported to the Sport Coordinator even if you do not call for assistance.

Update 1 for 2021

[Appendix 15](#)

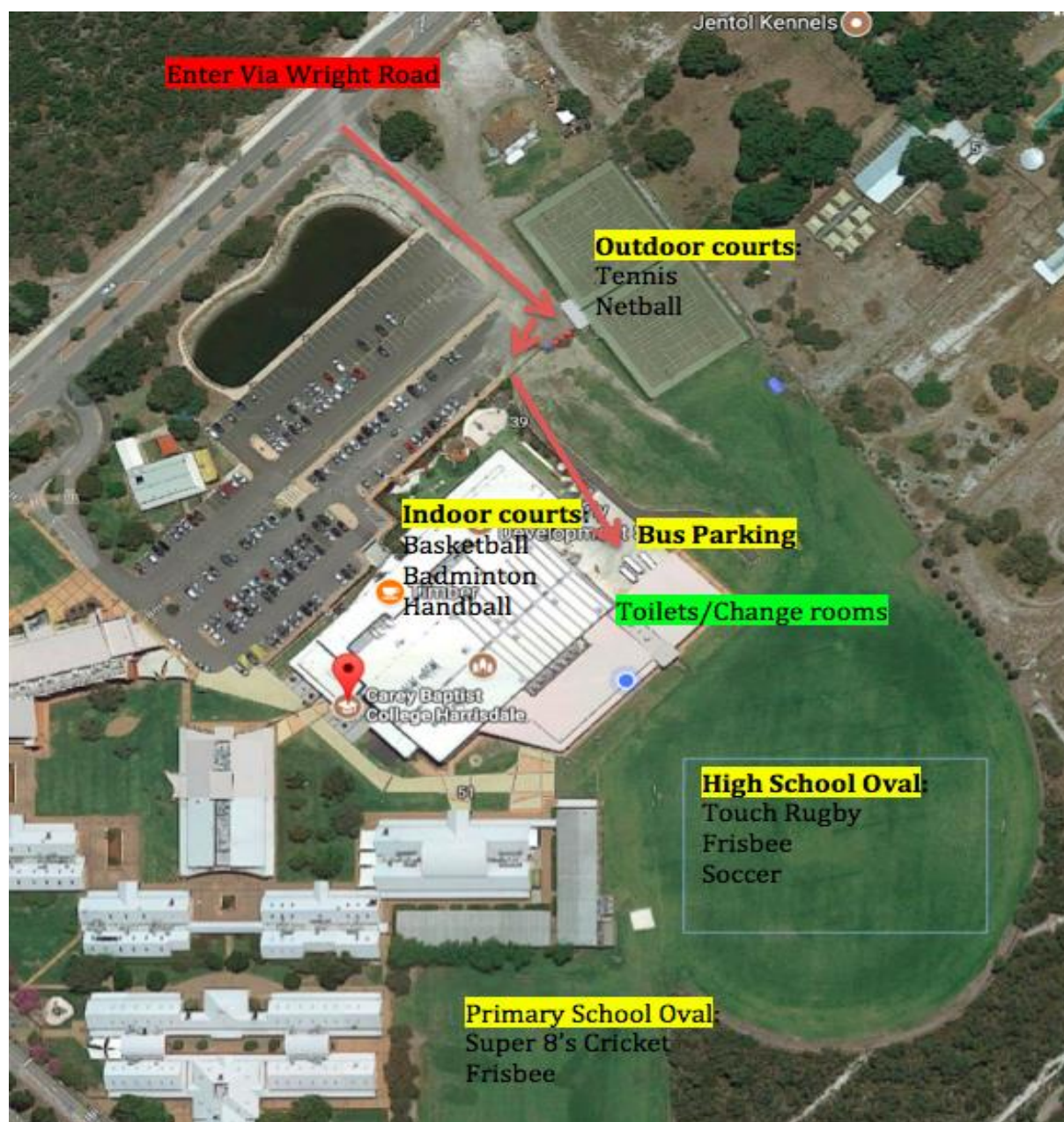
*TO "SOUTHERN ASSOCIATED JUNIOR SCHOOLS"  
SCHOOL CONTACT LIST AND VENUE LOCATIONS*

Carey College

Chris Bolton  
[cbolton@carey.wa.edu.au](mailto:cbolton@carey.wa.edu.au)  
9394 9111  
0418 988 327

*Location:*

Basketball, Netball & Touch at Carey College. Parking is available at front of the College and/ or in car park located at the front of the College.



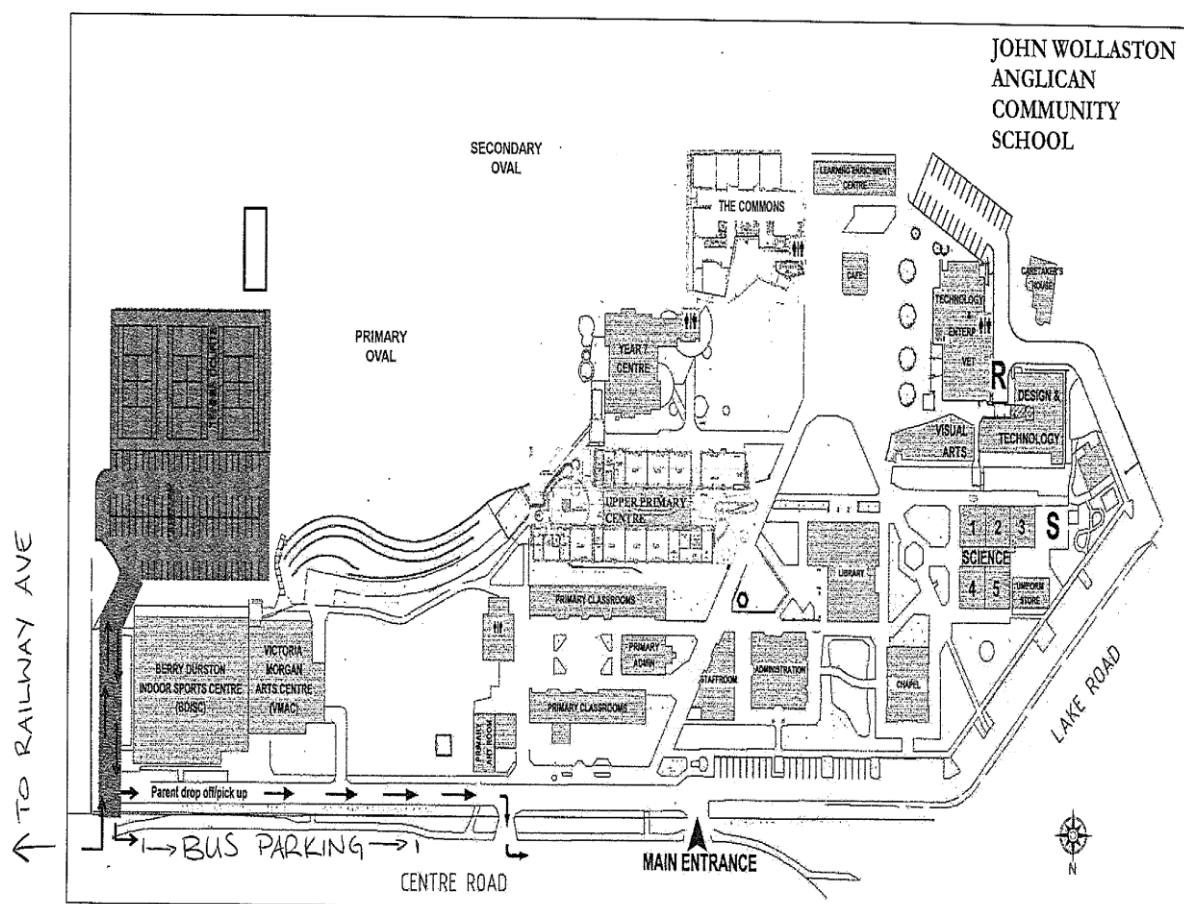
Update 1 for 2021

John Wollaston ACS

Claire D'Vaz  
[CDvaz@jwacs.wa.edu.au](mailto:CDvaz@jwacs.wa.edu.au)  
9495 8145  
0434 980 274

Location:

Centre Road, Camillo



Best access to bus parking:

- If travelling SE on Railway Ave, turn right onto Centre Rd. Bus parking on left.
- If travelling North on Lake Rd, continue on and turn right at the Railway Ave roundabout, then right onto Centre Rd. Bus parking on left.



Update 1 for 2021

Lumen Christi College

Josh Ainsworth

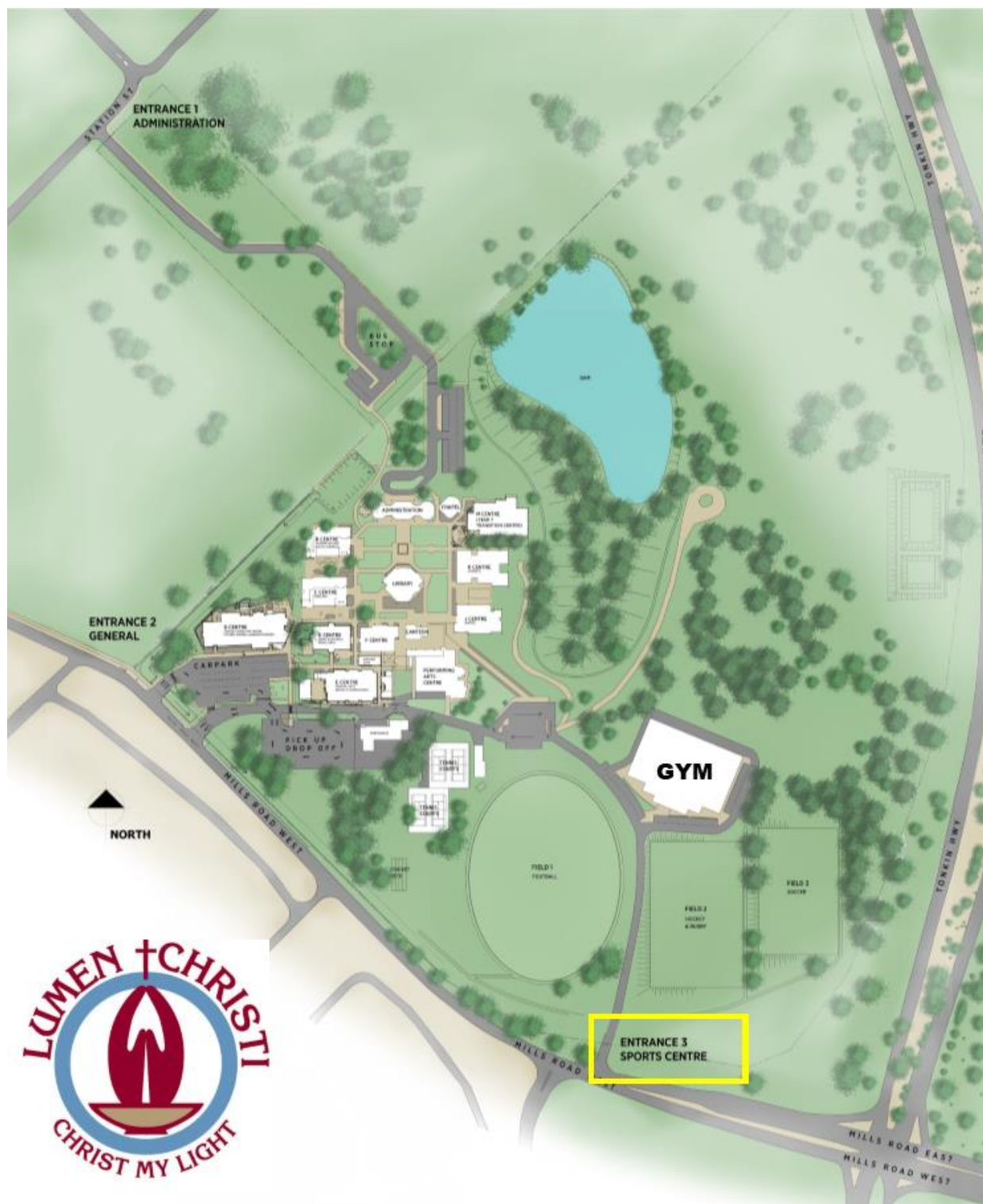
[joshua.ainsworth@cewa.edu.au](mailto:joshua.ainsworth@cewa.edu.au)

9394 9300

0430 595 216

*Location:*

Station Street, Martin



Update 1 for 2021

St Norbert College

Ryan Godfrey  
[rgodfrey@norbert.wa.edu.au](mailto:rgodfrey@norbert.wa.edu.au)  
93505433  
0466 098 021

*Location:*

Treasure Road, Queens Park



Basketball - Fr Peter O'Reilly Centre

Touch Rugby - Senior Oval

Cricket – Junior Oval



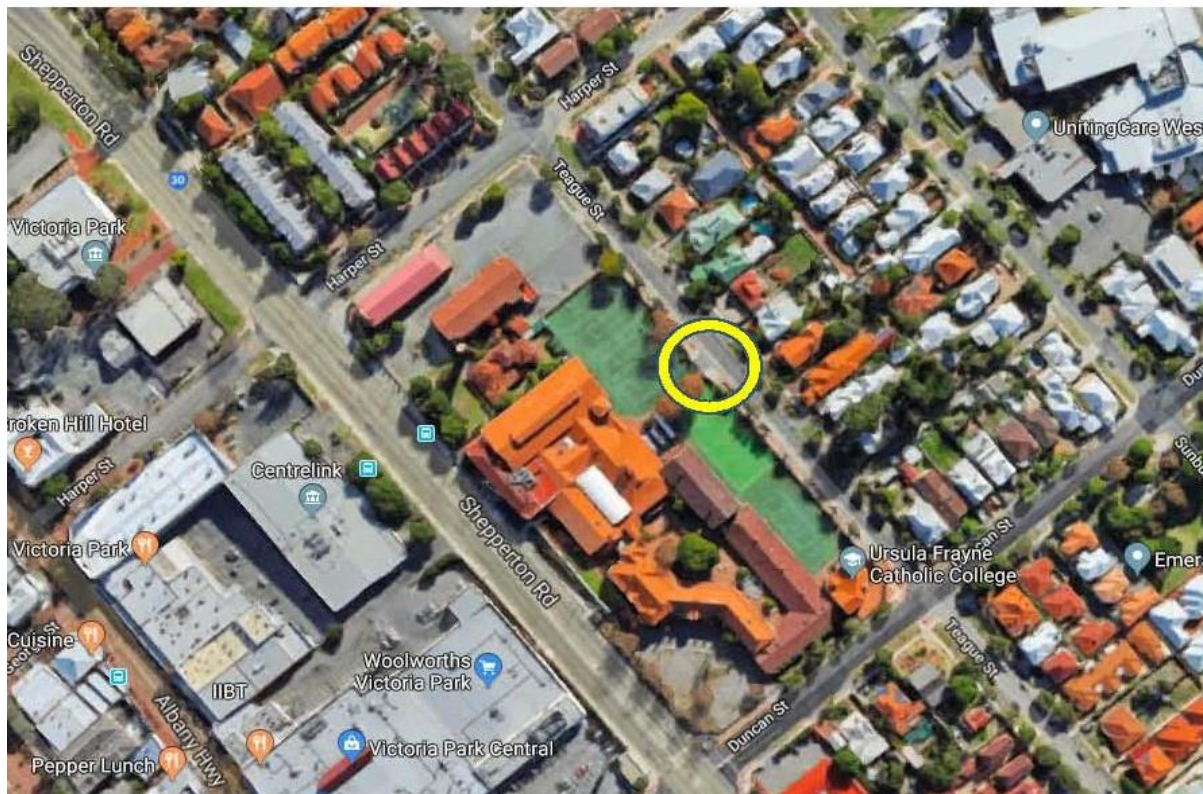
Update 1 for 2021

Ursula Frayne

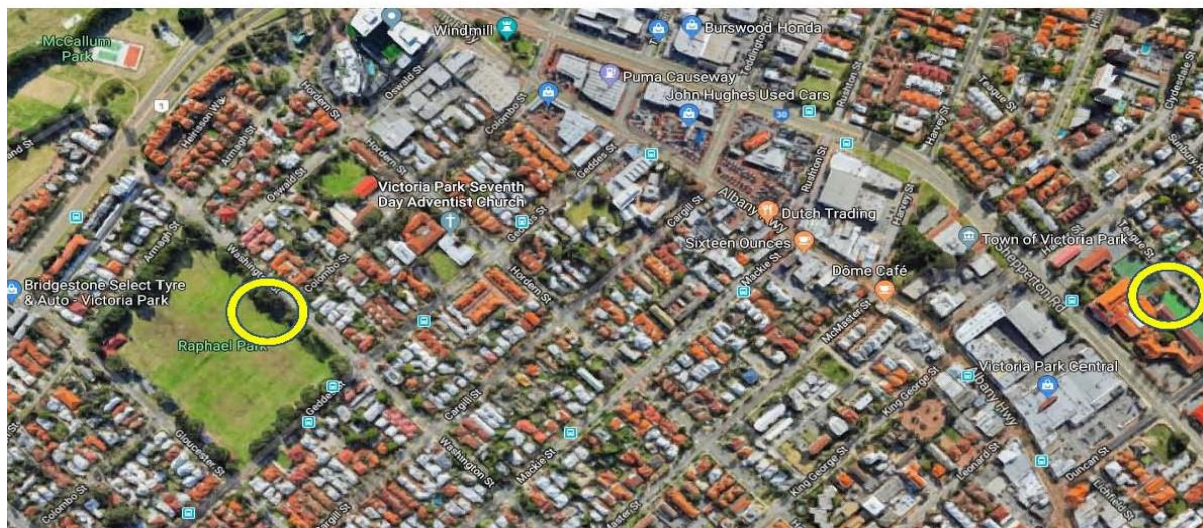
Danielle Griffiths (T2)  
[danielle.griffiths@ufcc.wa.edu.au](mailto:danielle.griffiths@ufcc.wa.edu.au)  
9470 0967  
04002 062 347  
Jodie Walsh (T1)  
[jodie.walsh@ufcc.wa.edu.au](mailto:jodie.walsh@ufcc.wa.edu.au)

*Location:* Bus parking at UFCC in Teague St, enter off Duncan St.

## BUS ENTRY TO UFCC of TEAGUE STREET



PARKING at RAPHAEL PARK in VIC PARK road side on Washington Street





Update 1 for 2021

Corpus Christi College

James Howard  
[james.howard@cewa.edu.au](mailto:james.howard@cewa.edu.au)  
6332 2614  
0439 903 992

*Location:*

Dean Rd entrance near new gym. Park on paved area next to Industrial Arts Building. Outdoor courts located on North side of new

Touch and Soccer will be played on Yidarra Oval at the South – West corner of the property.  
Large buses can drop at main bus bay on Murdoch Drive or rear bus bay on Dean Rd adjacent to gym.  
Buses can also park in the Student car park off Hawke pass and walk to all venues from there (see map for pedestrian routes)  
Small buses may also park on paving near gym (enter off Dean Rd) or staff car park near Yidarra Oval (enter off Murdoch Drive)



## Update 1 for 2021

Emmanuel College

Jarrold Parry  
[jarrod.parry@cewa.edu.au](mailto:jarrod.parry@cewa.edu.au)  
9414 4000  
0432 282 507

*Location:*

Kemp Rd, Southern entrance off Beeliar Dve, past school.  
Change rooms are located at the north end of the football oval, near the basketball courts.





Update 1 for 2021

Kennedy Baptist College

Karina Podmore

[kpodmore@kennedy.wa.edu.au](mailto:kpodmore@kennedy.wa.edu.au)

9314 7722

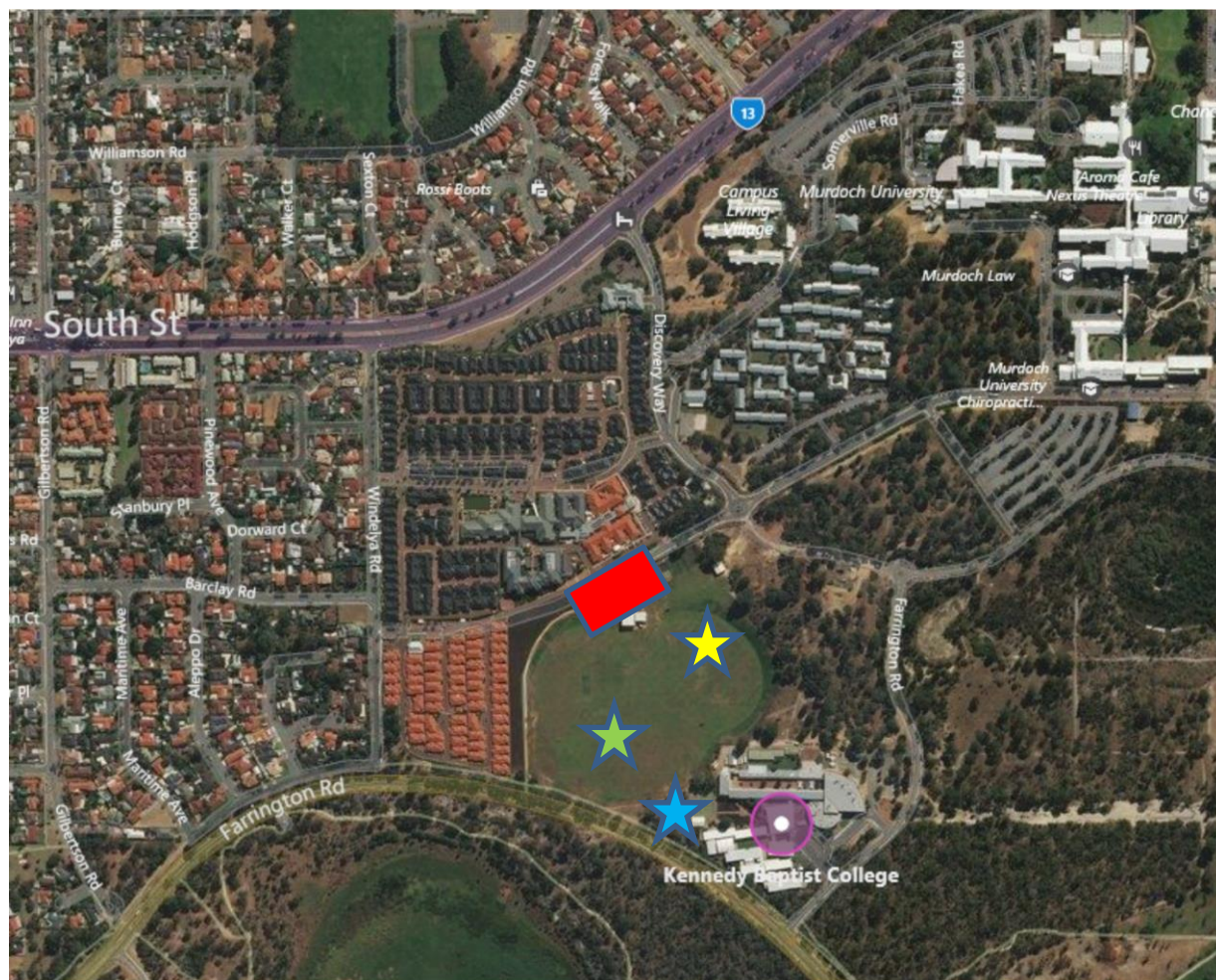
0447 447 351





South Entrance to Murdoch University

Farrington Rd, Murdoch

*Location:*

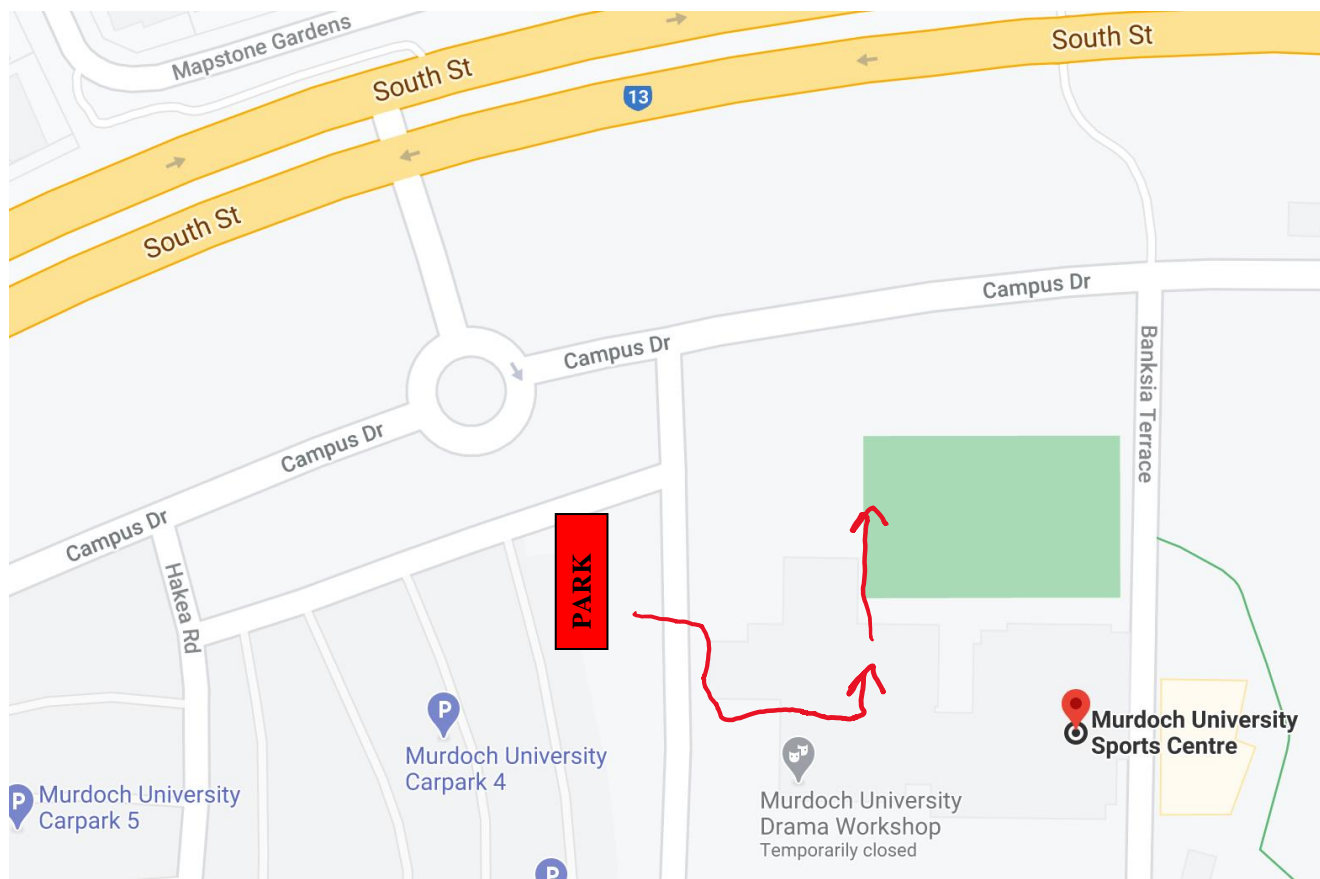
Farrington Rd, Murdoch Western Australia 6150



-  Basketball/Netball
-  Cricket
-  Touch Rugby/Soccer
-  **PARKING** – enter off south street onto discovery way, turn right at the first roundabout and the carpark can be found on the left.

Update 1 for 2021

**Kennedy Baptist College – SASJ - Year 10 Netball Girls Venue - Winter**  
**Murdoch University Netball Courts**  
**(streetside parking opposite centre)**



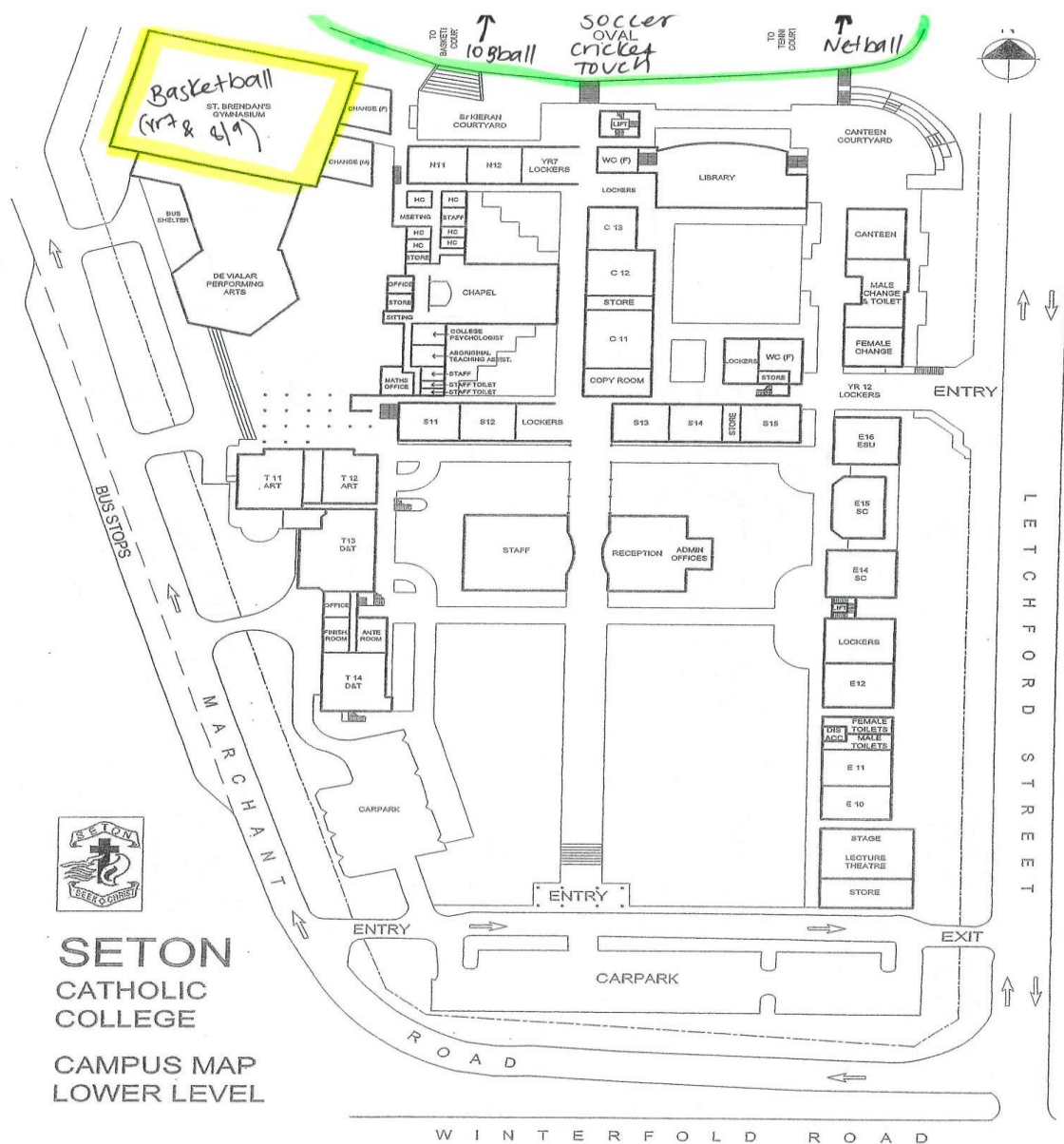
Update 1 for 2021

Seton College

Renea Mayer  
[renea.mayer@cewa.edu.au](mailto:renea.mayer@cewa.edu.au)  
9331 9685  
0401 630 245

Location:

Seton Sports Team Parking: Letchford Street Samson; buses can park on driveway in front of oval.





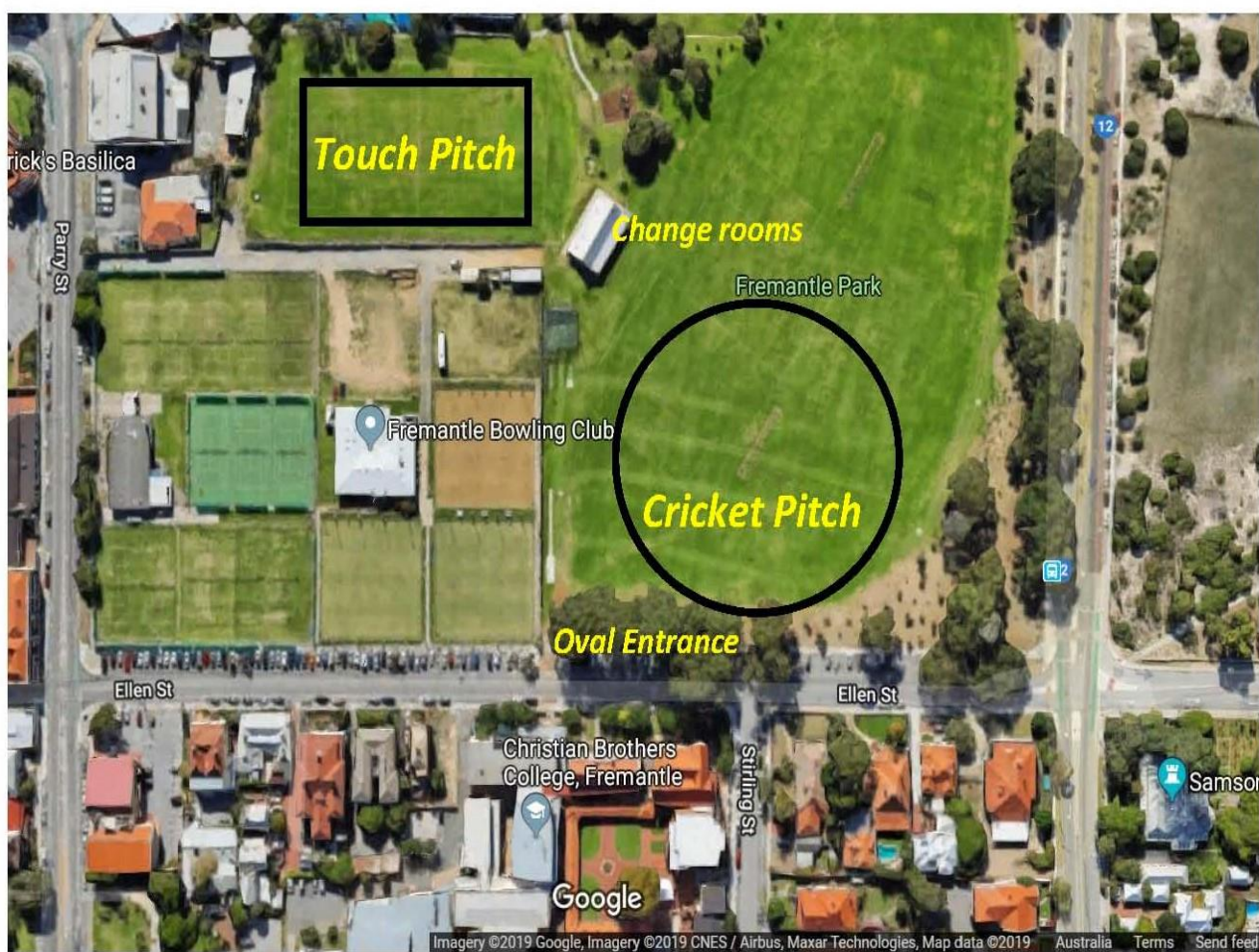
Update 1 for 2021

CBC Fremantle

Troy Mollica  
[troy@cbcfremantle.wa.edu.au](mailto:troy@cbcfremantle.wa.edu.au)  
9336 2700  
0413 577 652

*Location:* 51 Ellen Street, Fremantle.

Entry to oval is directly across from the main school entrance. Touch rugby pitch is located behind changerooms.





# Update 1 for 2021

Mercedes

Natalie Munro

[nmunro@mercedes.wa.edu.au](mailto:nmunro@mercedes.wa.edu.au)

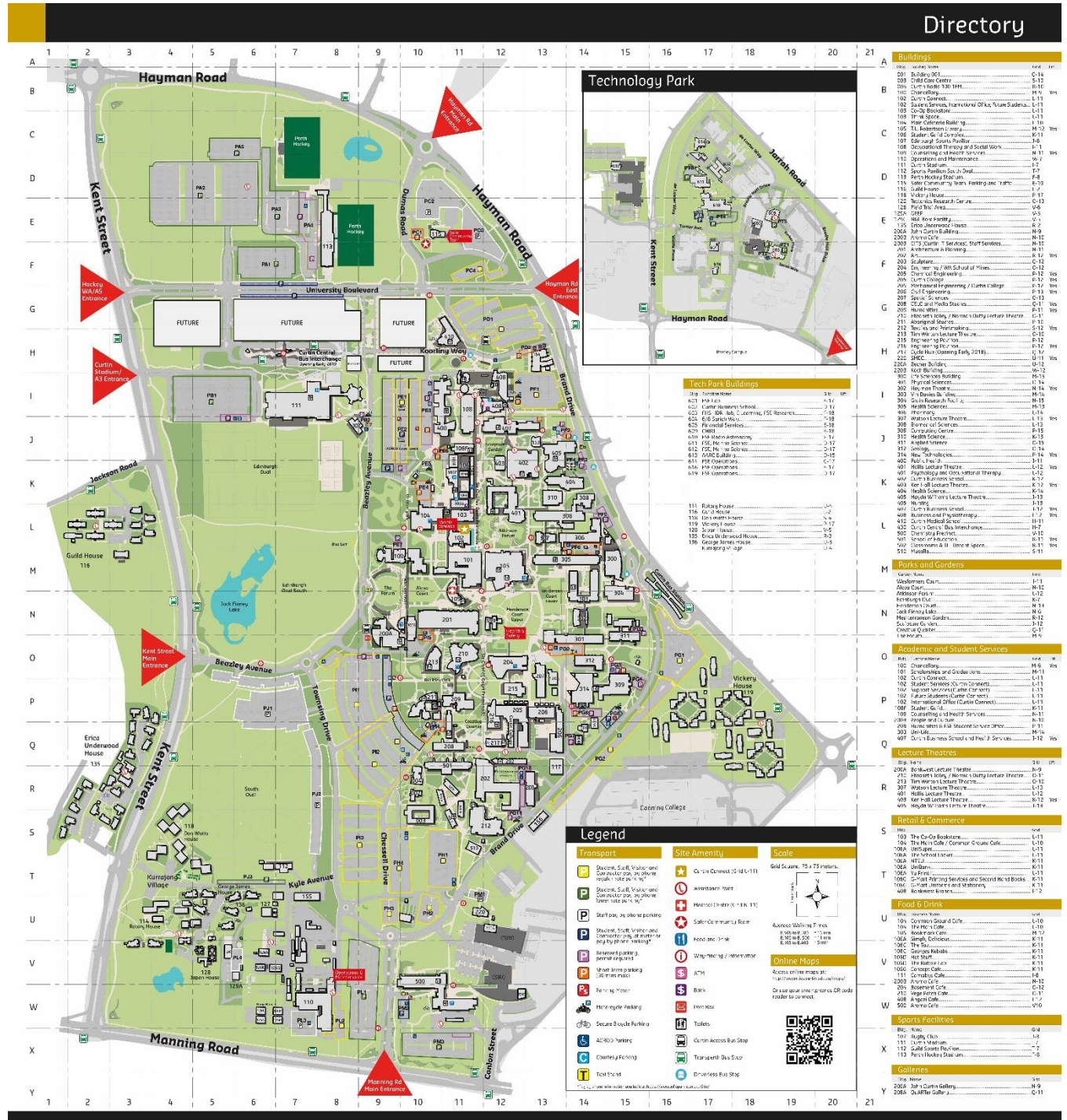
9323 1323

0411 232 796

Location:

Victoria Square, Perth

(Using central venue: Curtin Stadium, Kent St, Bentley)



## Update 1 for 2021

ACC

Trent Sharpe (**SASJ Contact**)

[trent.sharpe@cewa.edu.au](mailto:trent.sharpe@cewa.edu.au)

9241 5298

0408 958 415

Suzie Ehlers – Executive Officer

[suzie.ehlers@cewa.edu.au](mailto:suzie.ehlers@cewa.edu.au)

9241 5201

0400252112

Kyle March – Director of Sport

[kyle.march@cewa.edu.au](mailto:kyle.march@cewa.edu.au)

9241 5200

0412153222

Jason Marrable – Inclusion & Participation Manager

[jason.marrable@cewa.edu.au](mailto:jason.marrable@cewa.edu.au)

9241 5202

0466 356 207



[Appendix 16](#)

*TO "SOUTHERN ASSOCIATED JUNIOR SCHOOLS"  
WORKING WITH CHILDREN LEGISLATION*

## **Working With Children – Legislation**

From 1 January 2006 the State Government introduced legislation requiring certain people working with children in WA to undergo a "Working with Children Check" (WWC). The WWC is compulsory under government legislation and ACC schools have to comply with this legislation. In 2008 the legislation will affect people working with children aged between 13-17 years. Persons deemed to be working with children are any volunteers, employees or contractors (over 18 years of age) who in their usual duties are likely to have contact with children. Contact includes any form of physical contact, oral communication and electronic communication.

People may also be exempt from the legislation if they are a:

- volunteer under 18 years of age
- volunteer who is a parent of a child at an ACC school
- volunteer (over 18 years of age) that has worked with children on no more than five calendar days in a year.

For the purposes of these guidelines, persons deemed to be volunteers are those that are engaged in child-related work for, but are not employed by, the school. The term volunteer is not defined in the legislation. Volunteers that are being "reimbursed" for out of pocket expenses such as travel/uniform are still regarded as volunteers and not employees. However, volunteers that receive payments as a "reward" and not a "reimbursement" may be considered as employees and not volunteers. Schools will have to make their own "common sense" decision when determining the status of persons as volunteers or employees. In cases where a volunteer has received a very minimal payment then the school may consider them as a volunteer. In most cases an employee is someone that has received a wage/payment and has signed a contract of employment.

Schools involved in sub-association sport are required to comply with the legislation. Schools must ensure that all coaches, officials and bus drivers that will have contact with children at sporting events (whether they are paid or volunteers) have undergone a working with children check and hold a valid WWC card number (excluding those covered under exemptions above). To comply with the legislation you will have to keep records to ensure that people working at your sporting events have their WWC ID in order.

WWC records can be recorded in a simple format using the following example:

<b>POSITION</b>	<b>NAME</b>	<b>VOLUNTEER/PAID</b>	<b>EXEMPT? – WHY</b>	<b>WWC CARD NUMBER</b>
Sports Trainer	John Brown	Paid	No	123456
Basketball ref	Sue Brown	Volunteer	Yes – parent of David Brown	Not required
Bus Driver	Rob Jones	Paid	No	123455

For more information:

ACC Guidelines: <http://www.accsport.asn.au/specialdl/policies/wwc.PDF>

WWC website at: [www.checkwwc.wa.gov.au](http://www.checkwwc.wa.gov.au)

Update 1 for 2021

**Appendix 17**

*TO "SOUTHERN ASSOCIATED JUNIOR SCHOOLS "*

**SASJ EAST UNIFORMS**

SCHOOL SPORT	CAREY	JOHN WOLLASTON	LUMEN CHRISTI	ST NORBERT	URSULA FRAYNE
BASKETBALL	BLACK SINGLET, GREEN SHORTS, WHITE SOCKS	BLUE, WHITE & RED SINGLET, BLUE SHORTS		ROYAL & GOLD SINGLET & SHORTS, WHITE SOCKS	BLACK, RED BASKETBALL SINGLET, BLUE SHORTS
TOUCH	BLACK PE SHIRT, GREEN SHORTS, WHITE SOCKS	BLUE, WHITE & RED SHIRTS, NAVY SHORTS		GOLD & ROYAL SHIRT, BLUE SHORTS, WHITE SOCKS	BLACK/WHITE/RED SHIRTS, BLUE SHORTS
CRICKET	BLACK PE SHIRT, GREEN SHORTS, WHITE SOCKS	BLUE, WHITE & RED SHIRTS, NAVY SHORTS		GOLD & ROYAL SHIRT, BLUE SHORTS, WHITE SOCKS	BLACK/WHITE/RED SHIRTS, BLUE SHORTS
INDOOR BEACH VOLLEYBALL					
NETBALL	BLACK PE SHIRT, GREEN SHORTS, WHITE SOCKS, BIBS	RED SHIRTS, NAVY SHORTS, BIBS		ROYAL & GOLD TOP AND SHORTS. WHITE SOCKS, BIBS	RED SHIRTS, BLUE SHORTS, BIBS
SOCCER	BLACK PE SHIRT, GREEN SHORTS, LONG BLACK SOCKS, SHIN PADS	BLUE, WHITE & RED SHIRTS, STRIPE SOCKS, SHIN PADS		ROYAL & GOLD SHIRT, BLUE SHORTS, WHITE SOCKS	BLACK, WHITE & RED SHIRTS, BLUE SHORTS

Update 1 for 2021

**SASJ WEST UNIFORMS**

SCHOOL SPORT	CBC	CORPUS CHRISTI	EMMANUEL	KENNEDY	MERCEDES	SETON
BASKETBALL		BURGUNDY SINGLET, NAVY SHORTS, WHITE SOCKS	WHITE SINGLETS (GIRLS), NAVY & YELLOW SINGLETS (BOYS), NAVY SHORTS, WHITE SOCKS	NAVY SINGLET, SKY BLUE SWIRL, NAVY SHORTS, WHITE SOCKS		RED/WHITE & BLACK SINGLET, BLACK SHORTS, WHITE SOCKS
TOUCH		BURGUNDY SINGLET, NAVY SHORTS, WHITE SOCKS	NAVY SHIRT, NAVY SHORTS	NAVY SINGLET, SKY BLUE STRIPE, NAVY SHORTS, WHITE SOCKS		RED/WHITE SHIRT (GIRLS), BLACK/WHITE (BOYS), BLACK SHORTS, WHITE SOCKS
CRICKET			NAVY SHIRT, NAVY SHORTS	NAVY SINGLET, SKY BLUE STRIPE, NAVY SHORTS, WHITE SOCKS		RED/WHITE SHIRT (GIRLS), BLACK/WHITE (BOYS), BLACK SHORTS, WHITE SOCKS
INDOOR BEACH VOLLEYBALL						
NETBALL		WHITE TOP, NAVY SKIRT, WHITE SOCKS, BIBS	TEAL, NAVY & WHITE TOPS, TEAL, NAVY SKIRTS, BIBS	KBC NETBALL DRESS WITH BLUE AND WHITE SWIRL		RED, WHITE & BLACK SHIRT, BLACK SHORTS, BIBS
SOCCER		NAVY & BURGUNDY SHIRT, NAVY SHORTS, LONG BURGUNDY SOCKS	TEAL STRIP (GIRLS), NAVY AND YELLOW STRIP (BOYS) NAVY SHORTS, NAVY SOCKS	KBC SOCCER TOP, NAVY SHORTS, WHITE SOCKS		RED/WHITE SHIRTS (GIRLS), BLACK/WHITE SHIRTS (BOYS) BLACK SHORTS, BLACK SOCKS

Update 1 for 2021

## ASSOCIATED AND CATHOLIC COLLEGES OF WA (INC) SASJ BASKETBALL SCORECARD

Are all students from HOME school in correct uniform?

YES / NO  
(Circle)

Are all students from VISITING school in correct uniform?

YES / NO  
(Circle)

FOFEIT

YES / NO  
(Circle)

Reason for forfeit:

YEAR  
GROUP

GENDER

DATE

### TIME-OUTS

FIRST HALF

SECOND HALF

EXTRA TIME

### TEAM FOULS




HOME SCHOOL :		FOULS				
#	PLAYER'S NAME	1	2	3	4	5
4						
5						
6						
7						
8						
9						
10						
11						
12						
13						
14						
15						
COACH						
A/COACH						

### TIME-OUTS

FIRST HALF

SECOND HALF

EXTRA TIME

### TEAM FOULS




VISITING SCHOOL :		FOULS				
#	PLAYER'S NAME	1	2	3	4	5
4						
5						
6						
7						
8						
9						
10						
11						
12						
13						
14						
15						
COACH						
A/COACH						

### RUNNING SCORE

HOME	VISITING	HOME	VISITING	HOME	VISITING
1	1	46	46	91	91
2	2	47	47	92	92
3	3	48	48	93	93
4	4	49	49	94	94
5	5	50	50	95	95
6	6	51	51	96	96
7	7	52	52	97	97
8	8	53	53	98	98
9	9	54	54	99	99
10	10	55	55	100	100
11	11	56	56	101	101
12	12	57	57	102	102
13	13	58	58	103	103
14	14	59	59	104	104
15	15	60	60	105	105
16	16	61	61	106	106
17	17	62	62	107	107
18	18	63	63	108	108
19	19	64	64	109	109
20	20	65	65	110	110
21	21	66	66	111	111
22	22	67	67	112	112
23	23	68	68	113	113
24	24	69	69	114	114
25	25	70	70	115	115
26	26	71	71	116	116
27	27	72	72	117	117
28	28	73	73	118	118
29	29	74	74	119	119
30	30	75	75	120	120
31	31	76	76	121	121
32	32	77	77	122	122
33	33	78	78	123	123
34	34	79	79	124	124
35	35	80	80	125	125
36	36	81	81	126	126
37	37	82	82	127	127
38	38	83	83	128	128
39	39	84	84	129	129
40	40	85	85	130	130
41	41	86	86	131	131
42	42	87	87	132	132
43	43	88	88	133	133
44	44	89	89	134	134
45	45	90	90	135	135

Scoring: In the empty column write the number of the player who scored.

HALF TIME SCORE				FULL TIME SCORE			
	H	V			H	V	
EXTRA TIME SCORE							
	H	V			H	V	

COACH/MANAGER (SIGNED) \_\_\_\_\_

UMPIRE(S) (SIGNED) \_\_\_\_\_

MATCH WON BY: \_\_\_\_\_

COMMENTS

Ensure all sections are completed and return immediately to your School Sports Coordinator.

**ASSOCIATED AND CATHOLIC COLLEGES OF WA (INC)**

## SASJ NETBALL SCORECARD

YEAR  
GROUP**GRADE**

## GENDER

DATE \_\_\_\_\_

GIRLS

**FORFEIT**

YES / NO (Circle)

Reason for forfeit:

HOME SCHOOL

VISITING SCHOOL

### PROGRESSIVE SCORE

1	2	3	4	5	6	7	8	9	10
11	12	13	14	15	16	17	18	19	20
21	22	23	24	25	26	27	28	29	30
31	32	33	34	35	36	37	38	39	40
41	42	43	44	45	46	47	48	49	50
51	52	53	54	55	56	57	58	59	60
61	62	63	64	65	66	67	68	69	70
71	72	73	74	75	76	77	78	79	80
81	82	83	84	85	86	87	88	89	90
91	92	93	94	95	96	97	98	99	100

1st Quarter

11

2nd Quarter

--	--

3rd Quarter

11

All-Quadrant

461

**Final Score**

10

HOME  
SCHOOL

## 1st Quarter

11

2nd Quarter

1

3rd Quarter

01/01/2021

4th Quarter

4th Quarter

**Final Score**

1

### PROGRESSIVE SCORE

1	2	3	4	5	6	7	8	9	10
11	12	13	14	15	16	17	18	19	20
21	22	23	24	25	26	27	28	29	30
31	32	33	34	35	36	37	38	39	40
41	42	43	44	45	46	47	48	49	50
51	52	53	54	55	56	57	58	59	60
61	62	63	64	65	66	67	68	69	70
71	72	73	74	75	76	77	78	79	80
81	82	83	84	85	86	87	88	89	90
91	92	93	94	95	96	97	98	99	100

VISITING  
SCHOOL[illegible]

### SCHOOL PLAYER DETAILS

HOME SCHOOL	Name	Quarters			
		1	2	3	4
1					
2					
3					
4					
5					
6					
7					
8					
9					
10					

Visiting School	Name	Quarters			
		1	2	3	4
1					
2					
3					
4					
5					
6					
7					
8					
9					
10					

COACH/MANAGER (SIGNED)

UMPIRE(S) (SIGNED)

**MATCH WON BY:**

## COMMENTS

Ensure all sections are completed and return immediately to your School Sports Coordinator.

**ASSOCIATED AND CATHOLIC COLLEGES OF WA (INC)**  
**SASJ NETBALL SCORECARD**

	YEAR GROUP	GRADE	GENDER	DATE
			GIRLS	
FORFEIT	YES / NO (Circle)			
HOME SCHOOL				
Reason for forfeit:				
VISITING SCHOOL				
SCORE	Total for quarter	SCORE	Total for quarter	
1st Quarter		1st Quarter		
2nd Quarter		2nd Quarter		
3rd Quarter		3rd Quarter		
4th Quarter		4th Quarter		
Final Score		Final Score		
Progressive Centre Pass Record	1	2	3	4

### SCHOOL PLAYER DETAILS

HOME SCHOOL	Name	Quarters			
		1	2	3	4
1					
2					
3					
4					
5					
6					
7					
8					
9					
10					

VISITING SCHOOL	Name	Quarters			
		1	2	3	4
1					
2					
3					
4					
5					
6					
7					
8					
9					
10					

COACH/MANAGER (SIGNED)	_____	_____
UMPIRE(S) (SIGNED)	_____	_____
MATCH WON BY:	_____	_____
<b>COMMENTS</b> _____		
<i>Ensure all sections are completed and return immediately to your School Sports Coordinator.</i>		

**ASSOCIATED AND CATHOLIC COLLEGES OF WA (INC)**  
**SASJ SOCCER SCORECARD**

## GENDER

--	--	--

Reason for forfeit:

VISITING  
SCHOOL

	FIRST HALF SCORE	SECOND HALF SCORE	FINAL
VISITING SCHOOL			

## GOALSCORERS

NUMBER	NAME	GOALS
HOME SCHOOL FINAL SCORE		

NUMBER	NAME	GOALS
VISITING SCHOOL FINAL SCORE		

UMPIRE(S) (SIGNED)

## COMMENTS

*Ensure all sections are completed and return immediately to your School Sports Coordinator.*

Update 1 for 2021

**ASSOCIATED AND CATHOLIC COLLEGES OF WA (INC)**  
**SASJ TOUCH SCORECARD**

Copyright



Update 1 for 2021

## SUPER 8's MATCH SCORESHEET

**DIVISION:**

**ROUND :**

**DATE :**

**MATCH BETWEEN:**

**V**

BATSMAN		RUNS SCORED BY OVER								PAIR TOTAL	
		Over 1				Over 2				RUNS	WICKETS
Pair 1											
Pair 2		Over 3				Over 4				RUNS	WICKETS
Pair 3		Over 5				Over 6				RUNS	WICKETS
Pair 4		Over 7				Over 8				RUNS	WICKETS
		<b>Total</b>								Runs	Wickets

**INNINGS OF:**

BATSMAN		RUNS SCORED BY OVER								PAIR TOTAL	
		Over 1				Over 2				RUNS	WICKETS
Pair 1											
Pair 2		Over 3				Over 4				RUNS	WICKETS
Pair 3		Over 5				Over 6				RUNS	WICKETS
Pair 4		Over 7				Over 8				RUNS	WICKETS
		<b>Total</b>								Runs	Wickets

Match Won by: \_\_\_\_\_

Final Score: \_\_\_\_\_

Coach/Manager Sign: \_\_\_\_\_

Comments: \_\_\_\_\_

ASSOCIATED AND CATHOLIC COLLEGES OF WA (INC)									
SASJ BEACH VOLLEYBALL SCORECARD									
Are all students from HOME school in correct uniform?		YES / NO (Circle)				YEAR GROUP		GENDER	
Are all students from VISITING school in correct uniform?		YES / NO (Circle)							
FORFEIT		YES / NO (Circle)				Reason for forfeit:			
TEAM LISTS		1ST SET		2ND SET		3RD SET			
HOME SCHOOL:		HOME	VISITING	HOME	VISITING	HOME	VISITING	Home	Away
1		1	1	1	1	1	1	1	1
2		2	2	2	2	2	2	2	2
3		3	3	3	3	3	3	3	3
4		4	4	4	4	4	4	4	4
5		5	5	5	5	5	5	5	5
6		6	6	6	6	6	6	6	6
7		7	7	7	7	7	7	7	7
8		8	8	8	8	8	8	8	8
9		9	9	9	9	9	9	9	9
10		10	10	10	10	10	10	10	10
11		11	11	11	11	11	11	11	11
12		12	12	12	12	12	12	12	12
		13	13	13	13	13	13	13	13
		14	14	14	14	14	14	14	14
VISITING SCHOOL:		15	15	15	15	15	15	15	15
1		16	16	16	16	16	16	16	16
2		17	17	17	17	17	17	17	17
3		18	18	18	18	18	18	18	18
4		19	19	19	19	19	19	19	19
5		20	20	20	20	20	20	20	20
6		21	21	21	21	21	21	21	21
7		22	22	22	22	22	22	22	22
8		23	23	23	23	23	23	23	23
9		24	24	24	24	24	24	24	24
10		25	25	25	25	25	25	25	25
11		26	26	26	26	26	26	26	26
12		27	27	27	27	27	27	27	27
		28	28	28	28	28	28	28	28
		29	29	29	29	29	29	29	29
		30	30	30	30	30	30	30	30
TOTALS									
F S I C N O A R L E	HOME SCHOOL	SETS	POINTS	VISITING SCHOOL		SETS	POINTS		
COACH/MANAGER (SIGNED)									
UMPIRE(S) (SIGNED)									
MATCH WON BY:									
COMMENTS									
Ensure all sections are completed and return immediately to your School Sports Coordinator.									